

# **NEWARK KIDS COUNT**

## **A Profile of Child Well-Being**

**Association for Children of New Jersey  
Stuart Grant, President, ACNJ Board of Trustees  
Cecilia Zalkind, Executive Director**

***Funding for Newark Kids Count is provided by*  
The Annie E. Casey Foundation  
The Prudential Foundation  
The Healthcare Foundation of New Jersey**

**Coordinated by Gina Lucas, Newark Outreach Coordinator  
Prepared by Becky Romanoff, Newark Outreach Associate  
with assistance from Eloisa Hernandez, Kids Count  
Coordinator**

**Association for Children of New Jersey © 2001  
35 Halsey Street, Newark, NJ 07102 (973) 643-3876  
[www.acnj.org](http://www.acnj.org)**

**NEWARK KIDS COUNT IS PRODUCED WITH ASSISTANCE FROM:**

**Sandra Accomando**  
The Apostles' House

**Meghan Ambrosio**  
Office of the Police Director  
Newark Police Department

**Michelle J. Baldwin**  
Office of Public Information  
Newark Public Schools

**John Beil**  
NJ AIDS Surveillance  
NJ Department of Health and Senior  
Services

**Suzanne Borys**  
Division of Mental Health Services  
NJ Department of Human Services

**Phil Burch**  
Center for Government Services, Edward  
J. Bloustein School of Planning and  
Public Policy  
Rutgers University

**Detective James Chieppa**  
Office of the Police Director  
Newark Police Department

**Beth Connolly**  
Division of Economic Assistance  
NJ Department of Human Services

**Pam Costa**  
Special Child Health Services  
NJ Department of Health and Senior  
Services

**Dick Crane**  
Division of Youth and Family Services  
NJ Department of Human Services

**Anthony DeBarros**  
Division of Sewers and Water Supply  
Newark Department of Water and Sewer  
Utilities

**Jay Duco**  
Division of Family Health Services  
NJ Department of Health and Senior  
Services

**Patrick Dwyer**  
STD Prevention and Control Program  
NJ Department of Health and Senior  
Services

**Len Feldman**  
Division of Youth and Family Services  
NJ Department of Human Services

**Sandy Feldman**  
Division of Youth and Family Services  
NJ Department of Human Services

**Theresa Garcia**  
Office of Health Services  
Newark Public Schools

**Cathy Joseph**  
Division of Youth and Family Services  
NJ Department of Human Services

**Deborah Jones**  
Division of Family Health Services  
NJ Department of Health and Senior  
Services

**Kevin McNally**  
Division of Family Health Services  
NJ Department of Health and Senior  
Services

**Richard Mullen**  
Facilities Information Systems  
NJ Department of Health and Senior  
Services

**Claudia Ocello**  
New Jersey Historical Society

**Leslee Parness**  
Greater Newark Conservancy

**Ernest Reock, Jr.**  
Center for Government Services, Edward  
J. Bloustein School of Planning and  
Public Policy  
Rutgers University  
**Kenneth Ryan**  
Division of Youth and Family Services  
NJ Department of Human Services

**Rose Smith**  
Community Clinical Services Department  
Children's Hospital of New Jersey

**Joe Sweatlock**  
Division of Family Health Services  
NJ Department of Health and Senior  
Services

**Donna Taafe**  
Programs for Parents, Inc.

**Sharon Tobin**  
Meeting Emergency Needs With Dignity

**Elnardo Webster**  
After School Youth Development Program  
Newark Public Schools

**Debra Wells**  
NJ AIDS Surveillance  
NJ Department of Health and Senior

The Photographs on the cover and throughout this publication are of children from the Friendly Fuld Neighborhood Center and the Discovery Charter School. ACNJ would like to thank both organizations for allowing us to photograph their students and include them in Newark Kids Count 2001.

***ACNJ would like to acknowledge local organizations for their support of Newark Kids Count***

Ad House, Inc.  
Affordable Housing Network of NJ  
The Apostles' House  
ASPIRA, Inc. of New Jersey  
Babyland Family Services, Inc.  
Bessie Green Community, Inc.  
Boys' & Girls' Clubs of Newark  
Catholic Campaign for Human Development  
Catholic Community Services  
Communities In Schools of Newark  
Communities In Schools of New Jersey  
Community Agencies Corporation of NJ  
Community Partners for Youth  
Covenant House New Jersey  
Newark Do Something  
Episcopal Community Development  
Family Service Bureau of Newark  
FOCUS Hispanic Center for Community Development, Inc.  
Friendly Fuld Neighborhood Centers, Inc.  
Gateway Maternal and Child Health Consortium  
Greater Newark Conservancy  
Healthy Mothers/Healthy Babies  
Hispanic Development Corporation  
International Youth Organization  
Ironbound Community Corporation  
La Casa de Don Pedro  
Lucent Technologies Foundation  
New Community Corporation  
New Jersey Community Loan Fund

New Jersey Historical Society  
Newark Community Development Corporation  
Newark Day Center  
Newark Emergency Services for Families  
Newark Fighting Back Partnership  
Newark Literacy Campaign  
Newark Preschool Council Head Start Program  
Newark Public Schools Office of Community Development  
Newark YMWCA  
North Reformed Church  
Planned Parenthood of Metropolitan NJ  
Protestant Community Centers, Inc.  
Salvation Army Ironbound Boys and Girls and Senior Club  
SHARE New Jersey  
St. Columba Neighborhood Club, Inc.  
The Heldrich Center for Workforce Development  
The Leaguers, Inc.  
The Ready Foundation  
The Salvation Army  
The Wight Foundation, Inc.  
Tri-City Peoples Corporation  
Trinity & St. Philip's Cathedral  
Unified Vailsburg Services Organization  
United Community Corporation  
United Way of Essex and West Hudson  
Urban League of Essex County  
Women's Urban Renewal Development Corporation  
Youth Consultation Service  
Youth Development Clinic

10,000 Mentors



**TABLE OF CONTENTS**

**INTRODUCTION**

**6**

**DATA HIGHLIGHTS**

**8**

**DEMOGRAPHICS**

**9**

**FAMILY WELL- BEING**

**17**

**CHILD HEALTH**

**22**

**MENTAL HEALTH**

**36**

**ENVIRONMENTAL HEALTH**

**38**

**EDUCATION**

**42**

**JUVENILE JUSTICE**

**48**

# INTRODUCTION

Association for Children of New Jersey (ACNJ) is pleased to present Newark Kids Count 2001, the fifth annual snapshot of child well-being in Newark, New Jersey. With generous support from The Prudential Foundation, The Healthcare Foundation of New Jersey and the Annie E. Casey Foundation, ACNJ produces Newark Kids Count to document a variety of indicators affecting outcomes for children. Newark Kids Count 2001 incorporates the most current statistics available to highlight the many complex and interrelated conditions faced by Newark's children every day.

Newark Kids Count 2001 serves as a resource tool for policymakers, citizens, educators, organizations and advocates so that informed decisions can be made based on data, not speculation, that will positively impact Newark's children. This data report also functions as a vehicle to track changes and trends over time so that child well-being is monitored on an ongoing basis.

As ACNJ reflects on five years of publishing Newark Kids Count, there is evidence that improvements have been made for children in some indicator areas. However, the data show that too many children continue to struggle with a multitude of unmet health, educational and economic needs. Until Newark Kids Count can depict outcomes for Newark's children that equal and surpass those of children in other communities, our commitment to improving child well-being must remain strong.

ACNJ welcomes comments and suggestions about Newark Kids Count so that we can best meet the informational needs of the community. We are committed to the Newark Kids Count initiative and thank all individuals and organizations that have embraced the report over the last five years. Newark's children unconditionally deserve our greatest efforts to show them that all Kids Count.



### **In Newark...**

**1 of every 3 children live in poverty, at risk of hunger and chronic illness.**

**Each week, 12 children are born with low birth weight.**

**Each month, over 23 babies are born not having received prenatal care.**

**Each month 123 Newark children under age 19 contract a Sexually Transmitted Disease.**

**Each month, over 74 babies are born to girls under age 19.**

**Each month, over 76 children are admitted to the hospital with the diagnosis of asthma.**

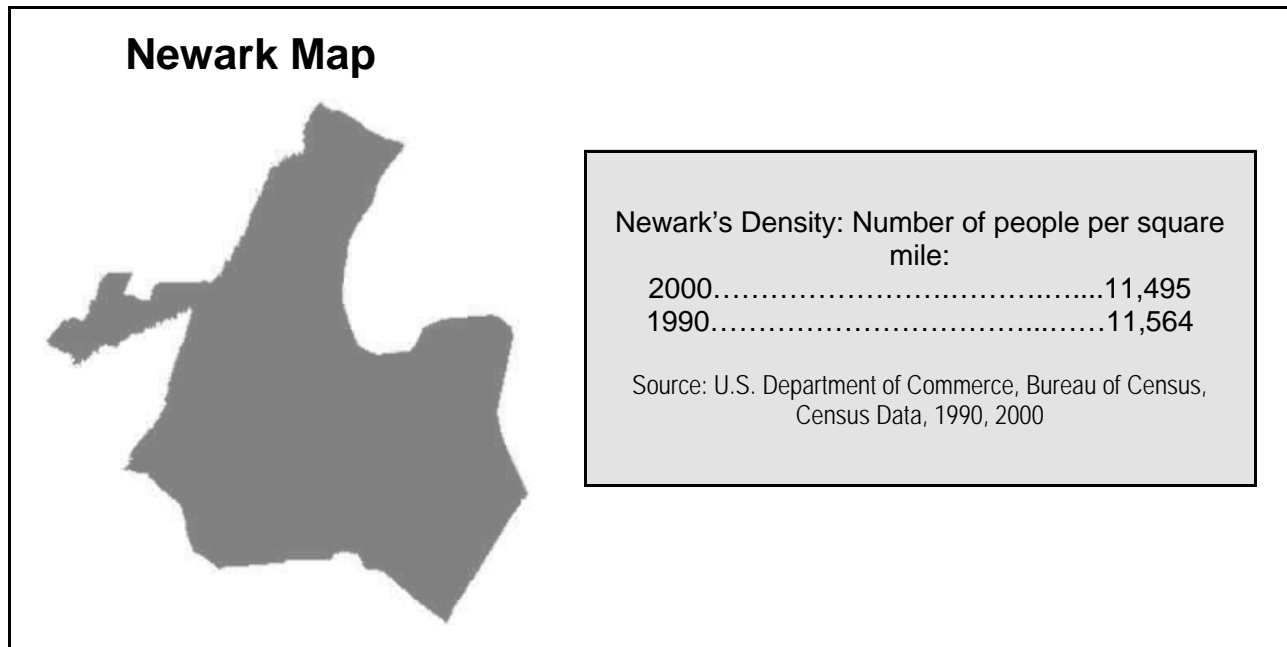
**Each day, we must strive to ensure that all Newark Kids Count.**

## Data Highlights From Newark Kids Count 2001

- ★ Newark's 1998 infant mortality rate is more than double that of New Jersey.
- ★ Newark children receiving public assistance has declined 46.6% from 1996 to 2000.
- ★ Reported total Sexually Transmitted Disease Cases of Newark children has increased by 31.4% from 1996 to 1999.
- ★ Total Newark juvenile arrests have declined 25.9% from 1994 to 1999.
- ★ 98.1% of surveyed Newark Public School nurses identified asthma as a major health problem facing Newark children.
- ★ Births to Newark women under 15 have declined 47.9% from 1994 to 1998.
- ★ Newark children receiving Food Stamps has declined 37.2% from 1996 to 2000.
- ★ Newark made up 66.2% of Essex County total Pediatric Asthma hospital admissions in 1999.

# DEMOGRAPHICS

		Newark	Essex County	New Jersey
Population	2000	273,546	793,633	8,414,350
	1990*	275,221	778,206	7,730,188
Population Change 1990 to 2000	Number	-1,675	+15,427	+684,162
	Percent	-0.6	+2.0	+8.9
Population Under 18 Years Old 2000		76,419	206,950	2,087,558
<i>Children under age 18 make up 28% of Newark's 2000 total population.</i>				
<p>*1990 Census counts are published in 1990 and thus do not include any changes published subsequently due to boundary changes or to the Count Question Resolution program.</p> <p>Note: Data not adjusted based on the Accuracy and Coverage Evaluation. For information on confidentiality protection, sampling error, nonsampling error, and definitions, see <a href="http://factfinder.census.gov/home/en/datanotes/expplu.html">http://factfinder.census.gov/home/en/datanotes/expplu.html</a>.</p> <p>Source: U.S. Census Bureau, Census 2000 Redistricting Data (P.L. 94-171) Summary File, and 1990 Census.</p>				






**2000 Population by Race and Hispanic Origin for All Ages in Newark, Essex County and New Jersey**

		Newark			Essex County			New Jersey		
		Hispanic	Non-Hispanic	Total	Hispanic	Non-Hispanic	Total	Hispanic	Non-Hispanic	Total
<b>One Race</b>	<b>White or Caucasian</b>	<b>33,587</b>	<b>38,950</b>	<b>72,537</b>	<b>54,151</b>	<b>298,708</b>	<b>352,859</b>	<b>547,496</b>	<b>5,557,209</b>	<b>6,104,705</b>
	<b>Black or African American</b>	<b>4,167</b>	<b>142,083</b>	<b>146,250</b>	<b>7,441</b>	<b>319,883</b>	<b>327,324</b>	<b>45,650</b>	<b>1,096,171</b>	<b>1,141,821</b>
	<b>American Indian and Alaskan Native</b>	<b>476</b>	<b>529</b>	<b>1,005</b>	<b>750</b>	<b>1,111</b>	<b>1,861</b>	<b>8,154</b>	<b>11,338</b>	<b>19,492</b>
	<b>Asian</b>	<b>125</b>	<b>3,138</b>	<b>3,263</b>	<b>288</b>	<b>29,141</b>	<b>29,429</b>	<b>3,264</b>	<b>477,012</b>	<b>480,276</b>
	<b>Native Hawaiian and other Pacific Islander</b>	<b>66</b>	<b>69</b>	<b>135</b>	<b>136</b>	<b>281</b>	<b>417</b>	<b>1,154</b>	<b>2,175</b>	<b>3,329</b>
	<b>Other</b>	<b>36,396</b>	<b>2,034</b>	<b>38,430</b>	<b>50,760</b>	<b>3,828</b>	<b>54,588</b>	<b>431,407</b>	<b>19,565</b>	<b>450,972</b>
<b>Total One Race</b>		<b>74,817</b>	<b>186,803</b>	<b>261,620</b>	<b>113,526</b>	<b>652,952</b>	<b>766,478</b>	<b>1,037,125</b>	<b>7,163,470</b>	<b>8,200,595</b>
<b>Two or More Races</b>		<b>5,805</b>	<b>6,121</b>	<b>11,926</b>	<b>8,821</b>	<b>18,334</b>	<b>27,155</b>	<b>80,066</b>	<b>133,689</b>	<b>213,755</b>
<b>Total Population</b>		<b>80,622</b>	<b>192,924</b>	<b>273,546</b>	<b>122,347</b>	<b>671,286</b>	<b>793,633</b>	<b>1,117,191</b>	<b>7,297,159</b>	<b>8,414,350</b>

Source: U.S. Census Bureau, Census 2000 Redistricting Data (P.L. 94-171) Summary File

**2000 Population by Race and Hispanic Origin for Children Under Age 18 in Newark, Essex County and New Jersey**

		Newark			Essex County			New Jersey		
		Hispanic	Non-Hispanic	Total	Hispanic	Non-Hispanic	Total	Hispanic	Non-Hispanic	Total
<b>One Race</b>	<b>White or Caucasian</b>	<b>9,251</b>	<b>6,725</b>	<b>15,976</b>	<b>15,028</b>	<b>61,262</b>	<b>76,290</b>	<b>155,085</b>	<b>1,240,057</b>	<b>1,395,142</b>
	<b>Black or African American</b>	<b>1,570</b>	<b>42,923</b>	<b>44,493</b>	<b>2,813</b>	<b>94,829</b>	<b>97,642</b>	<b>17,002</b>	<b>325,831</b>	<b>342,833</b>
	<b>American Indian and Alaskan Native</b>	<b>161</b>	<b>168</b>	<b>329</b>	<b>253</b>	<b>344</b>	<b>597</b>	<b>2,588</b>	<b>3,089</b>	<b>5,677</b>
	<b>Asian</b>	<b>34</b>	<b>594</b>	<b>628</b>	<b>97</b>	<b>7,265</b>	<b>7,362</b>	<b>1,179</b>	<b>123,291</b>	<b>124,470</b>
	<b>Native Hawaiian and other Pacific Islander</b>	<b>25</b>	<b>18</b>	<b>43</b>	<b>43</b>	<b>74</b>	<b>117</b>	<b>383</b>	<b>542</b>	<b>925</b>
	<b>Other</b>	<b>11,314</b>	<b>489</b>	<b>11,803</b>	<b>15,543</b>	<b>1,153</b>	<b>16,696</b>	<b>134,973</b>	<b>7,038</b>	<b>142,011</b>
<b>Total One Race</b>		<b>22,355</b>	<b>50,917</b>	<b>73,272</b>	<b>33,777</b>	<b>164,927</b>	<b>198,704</b>	<b>311,210</b>	<b>1,699,848</b>	<b>2,011,058</b>
<b>Two or More Races</b>		<b>1,768</b>	<b>1,379</b>	<b>3,147</b>	<b>2,864</b>	<b>5,382</b>	<b>8,246</b>	<b>27,584</b>	<b>48,916</b>	<b>76,500</b>
<b>Total Population</b>		<b>24,123</b>	<b>52,296</b>	<b>76,419</b>	<b>36,641</b>	<b>170,309</b>	<b>206,950</b>	<b>338,794</b>	<b>1,748,764</b>	<b>2,087,558</b>

Source: U.S. Census Bureau, Census 2000 Redistricting Data (P.L. 94-171) Summary File



### Newark 2000 Population by Ward

		Central Ward	East Ward	North Ward	South Ward	West Ward	Newark Total
<b>One Race (Not Hispanic or Latino)</b>	<b>White</b>	1,746	24,920	9,245	286	2,753	38,950
	<b>Black or African American</b>	37,282	10,892	10,586	42,961	40,362	142,083
	<b>American Indian and Alaskan Native</b>	111	97	162	80	79	529
	<b>Asian</b>	475	362	1,149	130	1,022	3,138
	<b>Native Hawaiian and Other Pacific Islander</b>	13	13	21	9	13	69
	<b>Other</b>	114	1,132	514	84	190	2,034
	<b>Total One Race</b>	39,741	37,416	21,677	43,550	44,419	186,803
<b>Two or more Races (Not Hispanic or Latino)</b>		754	2,396	1,064	657	1,250	6,121
<b>Hispanic or Latino</b>		11,146	21,881	39,265	2,225	6,105	80,622
<b>Total Population</b>		<b>51,641</b>	<b>61,693</b>	<b>62,006</b>	<b>46,432</b>	<b>51,774</b>	<b>273,546</b>

Source: U.S. Census Bureau, Census 2000 Redistricting Data (P.L. 94-171) Summary File



### Newark 2000 Population Under Age 18 by Ward

		Central Ward	East Ward	North Ward	South Ward	West Ward	Newark Total
<b>One Race (Not Hispanic or Latino)</b>	<b>White</b>	194	4,913	1,186	62	370	6,725
	<b>Black or African American</b>	11,604	2,439	2,495	13,520	12,865	42,923
	<b>American Indian and Alaskan Native</b>	29	27	56	31	25	168
	<b>Asian</b>	45	47	231	32	239	594
	<b>Native Hawaiian and Other Pacific Islander</b>	3	2	7	2	4	18
	<b>Other</b>	35	210	151	29	64	489
	<b>Total One Race</b>	11,910	7,638	4,126	13,676	13,567	50,917
<b>Two or more Races (Not Hispanic or Latino)</b>		158	412	242	188	379	1,379
<b>Hispanic or Latino</b>		3,801	5,111	12,313	863	2,035	24,123
<b>Total Population</b>		<b>15,869</b>	<b>13,161</b>	<b>16,681</b>	<b>14,727</b>	<b>15,981</b>	<b>76,419</b>

Source: U.S. Census Bureau, Census 2000 Redistricting Data (P.L. 94-171) Summary File

Newark Registered Voters	
Year	Number of Registered Voters
2000	130,460
1999	125,203
1998	128,013
1997	125,887
1996	113,405
<b>Change in number of registered voters 1996-2000: +17,055</b>	
<p><b>Number of Newark Residents who Voted in the November 2000 Presidential Election: 64,344</b></p> <p><b>Percent of Newark Registered Voters who Voted in the November 2000 Presidential Election: 49.3%</b></p> <p><b>8,402 Newark Residents (6.4% of Newark Registered Voters) voted in the April, 2001 Newark Public Schools Advisory Board Election.</b></p> <p><b>Source:</b> Commissioner of Registrations Office, County of Essex, Essex County Clerk.</p> <p><b>Dates used:</b> 10/96, 9/97, 10/98, 12/99, 11/00, 4/01</p>	

Economic Indicators		
	Essex County	New Jersey
Per Capita Income 1999	\$34,824	\$35,612
Estimated Median Household Income 1997	\$39,823	\$47,903
Estimated Percent of People of All Ages in Poverty 1997	17.3%	9.3%
Estimated Percent of Children Under Age 18 in Poverty 1997	27.0%	14.8%
<b>Note:</b>	<b>Estimates model 1997 income reported in the March 1998 Current Population Survey</b>	
<b>Source:</b>	<b>U.S. Census Bureau, Small Area Income and Poverty Estimates Program, Released November 2000; PCP Income, New Jersey Department of Labor, November 2000</b>	



**The Self Sufficiency Standard for Essex County, NJ – 1999**

<b>Monthly Costs</b>	<b>Adult</b>	<b>Adult+ Infant</b>	<b>Adult+ Preschooler</b>	<b>Adult+ School-age Child, Teen-ager</b>	<b>Adult+ Infant, Preschooler, School-age Child</b>	<b>2 Adults+ Infant, Preschooler</b>
Housing	\$681	\$820	\$820	\$820	\$1033	\$820
Child Care	0	474	495	247	1216	969
Food	164	241	249	429	437	466
Transportation	54	54	54	54	54	108
Health Care	89	182	160	208	224	259
Miscellaneous	99	177	178	176	296	262
Taxes	229	402	405	301	699	575
Federal Earned Income Tax Credit (EITC) (-)	0	0	0	(115)	0	0
Child Care Tax Credit (-)	0	(42)	(42)	(44)	(80)	(80)
Child Tax Credit (-)	0	(42)	(42)	(74)	(125)	(83)
<b>Monthly Self-Sufficiency Wage</b>	<b>\$1,315</b>	<b>\$2,267</b>	<b>\$2,277</b>	<b>\$2,002</b>	<b>\$3,756</b>	<b>\$3,295</b>
<b>Hourly Self-Sufficiency Wage</b>	<b>\$7.47</b>	<b>\$12.88</b>	<b>\$12.94</b>	<b>\$11.37</b>	<b>\$21.34</b>	<b>\$9.36 (per adult)</b>

Note: The Self-Sufficiency Standard measures how much income is needed for a family of a given composition in a given place to adequately meet its basic needs– without public or private assistance. The EITC, Child Care Tax Credit and Child Tax Credit are considered income and are therefore subtracted from the total dollar amount necessary to be self-sufficient. The EITC is zero for all columns because Monthly Self-Sufficiency Wage exceeded income eligibility to receive the credit in 1999.

Source: The Real Cost of Living: The Self-Sufficiency Standard for New Jersey, Legal Services of New Jersey Poverty Research Institute; and New Jersey Center for Economic Policy and Education

### Federal Earned Income Tax Credit (EITC) Estimates

	Newark		Essex County		New Jersey	
	1997	1998	1997	1998	1997	1998
Number of Federal Income Tax Filers	89,456	92,815	326,119	332,313	3,795,625	3,924,125
Number of Federal EITC Claimants	31,558	32,204	63,300	63,360	455,475	446,071
					<b>1997</b>	<b>1998</b>
Newark's Share of Essex County's Federal Income Tax Filers					27%	28%
Newark's Share of Essex County's Federal EITC Claimants					50%	51%
Percent of Newark Federal Income Tax Filers Who Claimed the Federal EITC					35%	35%
Percent of Essex County Federal Income Tax Filers Who Claimed the Federal EITC					19%	19%
Percent of New Jersey Federal Income Tax Filers Who Claimed the Federal EITC					12%	11%
<p>The Federal EITC is a tax credit program for low to moderate income working families. The credit offsets and in most cases exceeds any income taxes that are owed so that the claimant receives a cash refund. In 2000, New Jersey enacted a state level version called the NJ EITC, which will provide an additional credit to all working families earning below \$20,000 per year.</p> <p>Source: 2000 Internal Revenue Service (IRS) Zip Code Data and February 2001 Statement of Income File for New Jersey</p>						

# FAMILY WELL-BEING


Number of Residents Served by WIC						
	1996	1997	1998	1999	2000	% Change 1996-2000
<b>Newark</b>	12,486	14,724	13,791	16,773	12,483	-0.02%
<b>Essex County</b>	22,408	27,041	25,056	29,740	21,960	-2.0%
<b>New Jersey</b>	128,761	154,213	148,403	173,420	140,150	+8.8%
	1996	1999	2000			
Newark's Share of Essex County WIC Clients	55.7%	56.4%	56.8%			
Newark's Share of New Jersey WIC Clients	9.7%	9.7%	8.9%			
WIC Estimated Eligibles for Newark	26,191	24,190	23,511			
Percent of Estimated Eligibles Served in Newark	47.7%	69.3%	53.1%			
<b>Change in WIC Estimated Eligibles 1996-2000</b>				<b>-2,680</b>		
<b>Change in Estimated Eligibles Served in Newark 1996-2000</b>				<b>+5.4%</b>		

**WIC (Women, Infants and Children) is a special supplemental food program for women, infants and children. The program provides coupons for nutritious foods as well as nutrition screening and education to pregnant women, new mothers, infants, and children under five who are low income and at medical or nutritional risk.**

Source: NJ Department of Health and Senior Services

Average Number of Children Receiving Food Stamps								
	1996	1997	1998	1999	2000	% Change 1996-2000	% Change 1998-2000	
<b>Newark</b>	<b>45,147</b>	<b>40,299</b>	<b>36,856</b>	<b>32,446</b>	<b>28,368</b>	<b>-37.2%</b>	<b>-23.0%</b>	
<b>Essex County</b>	<b>67,536</b>	<b>59,686</b>	<b>54,280</b>	<b>47,275</b>	<b>41,470</b>	<b>-38.6%</b>	<b>-23.6%</b>	
<b>New Jersey</b>	<b>267,855</b>	<b>231,08</b>	<b>202,02</b>	<b>175,76</b>	<b>154,02</b>	<b>-42.5%</b>	<b>-23.8%</b>	
						<b>1996</b>	<b>1998</b>	<b>2000</b>
<b>Newark's Share of Essex County Children Receiving Food Stamps</b>						<b>66.8%</b>	<b>67.9%</b>	<b>68.4%</b>
<b>Newark's Share of New Jersey Children Receiving Food Stamps</b>						<b>16.9%</b>	<b>18.2%</b>	<b>18.4%</b>

Source: NJ Department of Human Services, Division of Family Development

 <b>People Served by Newark Food Pantries*</b>			
Year	Children	Adults	Total
<b>1999</b>	<b>18,209</b>	<b>15,224</b>	<b>33,433</b>
<b>1998</b>	<b>20,642</b>	<b>16,257</b>	<b>36,899</b>
<b>1997</b>	<b>19,079</b>	<b>15,219</b>	<b>34,298</b>
<b>1996</b>	<b>18,934</b>	<b>14,825</b>	<b>33,759</b>
<b>In 1999, 54.5% of people served in Newark Food Pantries were children.</b>			
<p>*Note: These numbers reflect the 10 Food Pantries in Newark that report to the Meeting Emergency Needs With Dignity (MEND) Network. They do not include every Food Pantry in the City of Newark. These food pantries are all located in Newark, but may serve residents of neighboring communities.</p>			
<p>Source: Meeting Emergency Needs With Dignity (MEND), Newark, NJ</p>			



<b>Average Number of Children Receiving Public Assistance</b>							
	<b>AFDC 1996</b>	<b>TANF 1997</b>	<b>TANF 1998</b>	<b>TANF 1999</b>	<b>TANF 2000</b>	<b>% Change 1996-2000</b>	<b>% Change 1998-2000</b>
<b>Newark</b>	34,913	29,078	25,305	21,392	18,648	-46.6%	-26.3%
<b>Essex County</b>	51,291	42,855	37,089	31,025	27,290	-46.8%	-26.4%
<b>New Jersey</b>	199,036	163,997	131,633	101,168	84,612	-57.5%	-35.7%
<p>Newark's Share of Essex County Children Receiving TANF 2000 ..... 68.3%</p> <p>Newark's Share of Essex County Children Receiving TANF 1999 ..... 69.0%</p> <p>Newark's Share of Essex County Children Receiving TANF 1998 ..... 68.2%</p> <p>Newark's Share of Essex County Children Receiving TANF 1997 ..... 67.9%</p> <p>Newark's Share of Essex County Children Receiving AFDC 1996 ..... 68.1%</p> <p>Newark's Share of New Jersey Children Receiving TANF 2000 ..... 22.0%</p> <p>Newark's Share of New Jersey Children Receiving TANF 1999 ..... 21.1%</p> <p>Newark's Share of New Jersey Children Receiving TANF 1998 ..... 19.2%</p> <p>Newark's Share of New Jersey Children Receiving TANF 1997 ..... 17.7%</p> <p>Newark's Share of New Jersey Children Receiving AFDC 1996 ..... 17.5%</p>							
<b>AFDC refers to Aid to Families with Dependant Children, TANF refers to Temporary Assistance to Needy Families.</b>							
Source: NJ Department of Human Services, Division of Family Development							



## Child Care

<b>Number of licensed child care centers in Newark</b>	
As of April 23, 2001 .....	180
As of January 13, 2000.....	184
As of October 30, 1997.....	160
<b>Total capacity for licensed child care centers in Newark</b>	
As of April 23, 2001 .....	12,487
As of January 13, 2000.....	12,551
As of October 30, 1997.....	10,093
<b>Number of registered Family Day Care Providers in Newark</b>	
As of May 25, 2001 .....	235
As of January 27, 2000.....	272
<b>Number of children cared for in Family Day Care in Newark</b>	
As of May 25, 2001 .....	823
As of January 27, 2000 .....	952
<b>Number of Abbott contracted centers in Newark for the 2000-2001 School Year .....</b>	
<b>63</b>	

**Family Day Care is New Jersey's registration program for providers who offer home-based child care.**

**A family day care provider may care for up to five children for a fee, in her or his residence.**

**Family Day**

**Care providers comply with state requirements, but operate as independent small business owners.**

Source: Division of Youth and Family Services, NJ Department of Human Services; Programs for Parents, Inc.; Newark Public Schools Office of Early Childhood

<b>Substantiated Child Abuse Cases</b>									
	1994	1995	1996	1997	1998	1999	% Change 1994-1999	% Change 1996-1999	
<b>Newark</b>	<b>1,355</b>	<b>1,206</b>	<b>1,624</b>	<b>1,590</b>	<b>1,443</b>	<b>1,176</b>	<b>-13.2%</b>	<b>-27.6</b>	
<b>Essex County</b>	<b>1,977</b>	<b>1,841</b>	<b>2,443</b>	<b>2,291</b>	<b>2,178</b>	<b>1,706</b>	<b>-13.7%</b>	<b>-30.2</b>	
<b>New Jersey</b>	<b>9,519</b>	<b>9,279</b>	<b>10,537</b>	<b>11,06</b>	<b>9,851</b>	<b>9,222</b>	<b>-3.1%</b>	<b>-12.5%</b>	
							<b>1995</b>	<b>1997</b>	<b>1999</b>
<b>Newark's Share of Essex County Substantiated Child Abuse Cases</b>							<b>65.5%</b>	<b>69.4%</b>	<b>68.9%</b>
<b>Newark's Share of New Jersey Substantiated Child Abuse Cases</b>							<b>13.0%</b>	<b>14.4%</b>	<b>12.8%</b>

Source: Division of Youth and Family Services, NJ Department of Human Services

<b>Out of Home Placements</b>							
	1995	1996	1998	1999	2000	% Change 1995-2000	
<b>Newark</b>	<b>1,304</b>	<b>1,369</b>	<b>1,457</b>	<b>1,473</b>	<b>1,453</b>	<b>+11.4%</b>	
<b>Essex County</b>	<b>1,871</b>	<b>1,667</b>	<b>2,015</b>	<b>2,056</b>	<b>2,063</b>	<b>+10.3%</b>	
<b>New Jersey</b>	<b>8,347</b>	<b>8,275</b>	<b>9,045</b>	<b>9,398</b>	<b>9,650</b>	<b>+15.6%</b>	
					<b>1996</b>	<b>1998</b>	<b>2000</b>
<b>Newark's Share of Essex County Out of Home Placements</b>					<b>82.1%</b>	<b>71.0%</b>	<b>70.4%</b>
<b>Newark's Share of New Jersey Out of Home Placements</b>					<b>16.5%</b>	<b>16.1%</b>	<b>15.1%</b>

Source: Division of Youth and Family Services, NJ Department of Human Services

# CHILD HEALTH

		1994	1995	1996	1997	1998	% Change 1994-1998
Newark	Total Number of Births	5,565	5,293	5,086	5,102	4,748	-14.7%
	Percent Low Birth Weight	13.5%	13.1%	12.5%	13.2%	13.2%	*
	Percent Receiving No Prenatal Care	8.0%	7.8%	8.3%	8.1%	6.0%	*
Essex County	Total Number of Births	13,095	12,647	12,486	12,303	12,083	-7.7%
	Percent Low Birth Weight	11.0%	10.4%	11.0%	11.2%	11.6%	*
	Percent Receiving No Prenatal Care	5.1%	4.8%	5.0%	4.8%	3.7%	*
New Jersey	Total Number of Births	117,684	114,905	114,365	113,332	113,850	-3.3%
	Percent Low Birth Weight	7.4%	7.4%	7.5%	7.7%	8.0%	*
	Percent Receiving No Prenatal Care	1.3%	1.1%	1.3%	1.2%	1.1%	*

Note: 1997 New Jersey numbers do not include unknown and institutional births.

\* In indicators where incidence is low, the rate may be statistically insignificant and caution is recommended when using rates and comparing across years.

Source: New Jersey Department of Health and Senior Services, Center for Health Statistics

Births to Teenaged Mothers by Race and Ethnicity							
		1998			1997		
		Ages 10 to 14	Ages 15 to 19	Total	Ages 10 to 14	Ages 15 to 19	Total
Newark	White	0	33	33	<5	22	*
	Black	18	547	565	26	632	658
	Hispanic	7	278	285	<5	304	*
	Other	0	7	7	<5	<5	*
	Unknown	0	1	1	0	0	0
	Total	25	866	891	30	960	990
New Jersey	White	14	2,023	2,037	11	2,084	2,095
	Black	96	3,466	3,562	117	3,404	3,521
	Hispanic	48	2,932	2,980	63	2,867	2,930
	Other	1	188	189	6	269	275
	Unknown	1	52	53	0	0	0
	Total	160	8,661	8,821	197	8,624	8,821

\* The total could not be computed because the numbers reported in some categories are less than 5. Source: New Jersey Department of Health and Senior Services, Center for Health Statistics

		1994	1995	1996	1997	1998	% Change 1994-1998
<b>Newark</b>	<b>Percent of Total Births to Unmarried Mothers</b>	<b>69.9%</b>	<b>68.7%</b>	<b>70.7%</b>	<b>69.2%</b>	<b>69.0%</b>	*
	<b>Number of Births to Women Under 15</b>	<b>48</b>	<b>29</b>	<b>27</b>	<b>30</b>	<b>25</b>	<b>-47.9%</b>
	<b>Number of Births to Women 15-19</b>	<b>1,098</b>	<b>1,055</b>	<b>999</b>	<b>960</b>	<b>866</b>	<b>-21.1%</b>
<b>Essex County</b>	<b>Percent of Total Births to Unmarried Mothers</b>	<b>49.0%</b>	<b>47.5%</b>	<b>48.2%</b>	<b>48.1%</b>	<b>48.7%</b>	*
	<b>Number of Births to Women Under 15</b>	<b>66</b>	<b>50</b>	<b>36</b>	<b>42</b>	<b>33</b>	<b>-50.0%</b>
	<b>Number of Births to Women 15-19</b>	<b>1,667</b>	<b>1,618</b>	<b>1,571</b>	<b>1,486</b>	<b>1,393</b>	<b>-16.4%</b>
<b>New Jersey</b>	<b>Percent of Total Births to Unmarried Mothers</b>	<b>27.6%</b>	<b>27.2%</b>	<b>27.1%</b>	<b>27.7%</b>	<b>28.7%</b>	*
	<b>Number of Births to Women Under 15</b>	<b>285</b>	<b>227</b>	<b>208</b>	<b>197</b>	<b>160</b>	<b>-43.9%</b>
	<b>Number of Births to Women 15-19</b>	<b>9,330</b>	<b>9,117</b>	<b>8,599</b>	<b>8,624</b>	<b>8,661</b>	<b>-7.2%</b>

Note: 1997 New Jersey numbers do not include unknown and institutional births.

\* In indicators where incidence is low, the rate may be statistically insignificant and caution is recommended when using rates and comparing across years.

Source: New Jersey Department of Health and Senior Services, Center for Health Statistics

<b>Low Birth Weight By Mother Drinking During Pregnancy</b>				
	<b>Newark</b>		<b>New Jersey</b>	
	<b>1998</b>	<b>1997</b>	<b>1998</b>	<b>1997</b>
<b>Drank</b>	<b>67</b>	<b>79</b>	<b>355</b>	<b>397</b>
<b>Did not Drink</b>	<b>536</b>	<b>578</b>	<b>8,174</b>	<b>7,877</b>
<b>Unknown</b>	<b>24</b>	<b>16</b>	<b>333</b>	<b>413</b>
<b>Total</b>	<b>627</b>	<b>673</b>	<b>8,862</b>	<b>8,687</b>

<b>Low Birth Weight By Mother Smoking During Pregnancy</b>				
	<b>Newark</b>		<b>New Jersey</b>	
	<b>1998</b>	<b>1997</b>	<b>1998</b>	<b>1997</b>
<b>Smoked</b>	<b>206</b>	<b>206</b>	<b>1,567</b>	<b>1,677</b>
<b>Did not Smoke</b>	<b>408</b>	<b>455</b>	<b>7,008</b>	<b>6,645</b>
<b>Unknown</b>	<b>13</b>	<b>12</b>	<b>287</b>	<b>365</b>
<b>Total</b>	<b>627</b>	<b>673</b>	<b>8,862</b>	<b>8,687</b>

Source: New Jersey Department of Health and Senior Services, Center for Health Statistics

		1994	1995	1996	1997	1998	% Change 1994-1998
Newark	Infant Mortality Rate Per 1,000	15.8	12.7	14.9	13.3	13.5	-14.6%
	Number of Child Deaths (1-14)	36	31	33	36	14	-61.1%
	Number of Teen Deaths (15-19)	15	34	30	28	17	+13.3%
Essex County	Infant Mortality Rate Per 1,000	12.5	9.3	12.8	9.3	9.9	-20.8%
	Number of Child Deaths (1-14)	74	62	55	63	32	-56.8%
	Number of Teen Deaths (15-19)	44	53	47	47	27	-38.6%
New Jersey	Infant Mortality Rate Per 1,000	7.7	6.7	6.9	6.4	6.4	-16.9%
	Number of Child Deaths (1-14)	379	393	341	333	300	-20.8%
	Number of Teen Deaths (15-19)	264	282	273	280	245	-7.2%

Note: 1997 New Jersey numbers do not include unknown and institutional births.

Source: New Jersey Department of Health and Senior Services, Center for Health Statistics

	1994	1995	1996	1997	1998
Newark's Share of Essex County Births	42%	42%	41%	41%	39%
Newark's Share of New Jersey Births	5%	5%	4%	5%	4%
Newark's Share of Essex County Births to Women under 15	73%	58%	75%	71%	76%
Newark's Share of New Jersey Births to Women under 15	17%	13%	13%	15%	16%
Newark's Share of Essex County Births to Women 15-19	66%	65%	64%	65%	62%
Newark's Share of New Jersey Births to Women 15-19	12%	12%	12%	11%	10%
Newark's Share of Essex County Child Deaths (Ages 1-14)	49%	50%	60%	57%	44%
Newark's Share of New Jersey Child Deaths (Ages 1-14)	9%	8%	10%	11%	5%
Newark's Share of Essex County Teen Deaths (Ages 15-19)	34%	64%	64%	60%	63%
Newark's Share of New Jersey Teen Deaths (Ages 15-19)	6%	12%	11%	10%	7%



Note: 1997 New Jersey numbers do not include unknown and institutional births.

Source: New Jersey Department of Health and Senior Services, Center for Health Statistics

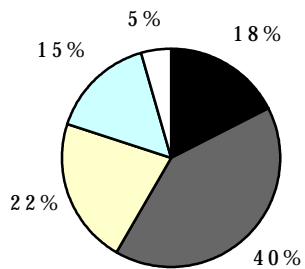


# Pediatric Asthma

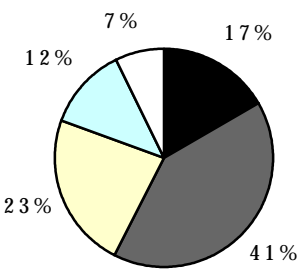
Total Children 18 and Under Admitted to the Hospital with the Diagnosis of Asthma			
	1998	1999	% Change 1998-1999
Newark	845	919	+8.8%
Essex County	1,263	1,389	+10.0%
New Jersey	4,991	6,052	+21.3%

Children 18 and Under Admitted to the Hospital <u>through the Emergency Room</u> with the Diagnosis of Asthma			
	1998	1999	% Change 1998-1999
Newark	648	732	+13.0%
Essex County	912	1,044	+14.5%
New Jersey	3,026	3,810	+25.9%

**Newark 1999 Total Pediatric Asthma Hospital Admissions by Age**



**Newark 1998 Total Pediatric Asthma Hospital Admissions by Age**



Source: NJ Department of Health & Senior Services

79.7% of **Newark's** Total Pediatric Asthma Admissions were admitted into the hospital ***through the Emergency Room*** in 1999.

63.0% of **New Jersey's** Total Pediatric Asthma Admissions were admitted into the hospital ***through the Emergency Room*** in 1999.

76.7% of **Newark's** Total Pediatric Asthma Admissions were admitted into the hospital ***through the Emergency Room*** in 1998.

60.6% of **New Jersey's** Total Pediatric Asthma Admissions were admitted into the hospital ***through the Emergency Room*** in 1998.

Newark made up 66.2% of Essex County's Total Pediatric Asthma Admissions in 1999.

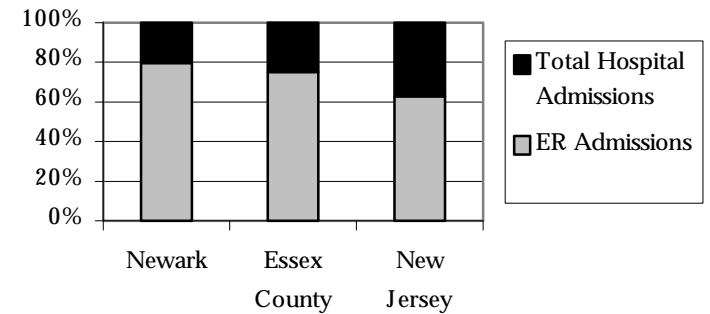
Newark made up 15.2% of New Jersey's Total Pediatric Asthma Admissions in 1999.

Newark made up 66.9% of Essex County's Total Pediatric Asthma Admissions in 1998.

Newark made up 16.9% of New Jersey's Total Pediatric Asthma Admissions in 1998.

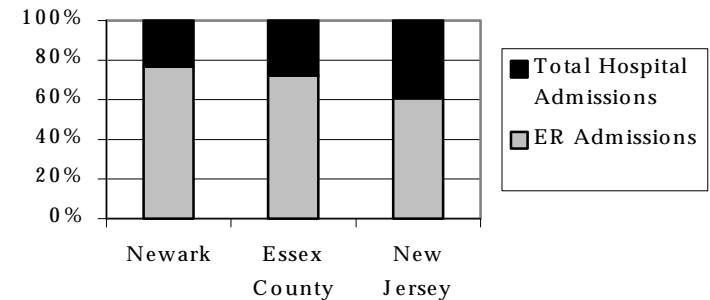
Source: NJ Department of Health & Senior Services

**1999 Asthma Admissions for Children 18 and Under**



Source: NJ Department of Health & Senior Services

**1998 Asthma Admissions for Children 18 and Under**



Source: NJ Department of Health & Senior Services




**New Jersey HIV/AIDS Surveillance Data**  
**Children Living with HIV Disease by Current Age at end of Year and HIV/AIDS Status**

		1996			1997			1998			1999			2000		
		Living With			Living With			Living With			Living With			Living With		
		HIV	AIDS	Total	HIV	AIDS	Total	HIV	AIDS	Total	HIV	AIDS	Total	HIV	AIDS	Total
<b>Newark</b>	Ages 5 to 12	30	36	66	40	36	76	49	36	85	50	35	85	54	34	88
	Ages 13 to 19	20	14	34	20	18	38	21	21	42	19	24	43	20	25	45
	<i>Total Ages 5 to 19</i>	<i>50</i>	<i>50</i>	<i>100</i>	<i>60</i>	<i>54</i>	<i>114</i>	<i>70</i>	<i>57</i>	<i>127</i>	<i>69</i>	<i>59</i>	<i>128</i>	<i>74</i>	<i>59</i>	<i>133</i>
<b>Essex County</b>	Ages 5 to 12	63	52	115	76	50	126	85	52	137	87	49	136	91	49	140
	Ages 13 to 19	37	23	60	30	31	61	28	31	59	29	34	63	35	37	72
	<i>Total Ages 5 to 19</i>	<i>100</i>	<i>75</i>	<i>175</i>	<i>106</i>	<i>81</i>	<i>187</i>	<i>113</i>	<i>83</i>	<i>196</i>	<i>116</i>	<i>83</i>	<i>199</i>	<i>126</i>	<i>86</i>	<i>212</i>
<b>New Jersey</b>	Ages 5 to 12	169	147	316	195	158	353	212	161	373	226	166	392	236	162	398
	Ages 13 to 19	86	69	155	86	84	170	83	87	170	82	95	177	96	103	199
	<i>Total Ages 5 to 19</i>	<i>255</i>	<i>216</i>	<i>471</i>	<i>281</i>	<i>242</i>	<i>523</i>	<i>295</i>	<i>248</i>	<i>543</i>	<i>308</i>	<i>261</i>	<i>569</i>	<i>332</i>	<i>265</i>	<i>597</i>

**Children Living with HIV/AIDS**– Every three months, the New Jersey Department of Health and Senior Services (NJDHSS) publishes statistics that reflect the number of persons living with HIV/AIDS in New Jersey by county of residence. These statistics are gathered by matching the state HIV/AIDS Reporting System (HARS) with the NJDHSS Death Certificate Registry on a monthly basis, and recording new deaths in the HARS. This allows NJDHSS to maintain and present current information on those still alive. As of December, 31, 2000, just over half (51%) of all New Jersey residents ever reported (since 1981) with HIV/AIDS were still alive.

Source: New Jersey Division of AIDS Prevention and Control, HIV/AIDS Surveillance Program, NJ Department of Health and Senior Services

 <b>Pediatric HIV/AIDS Cases and Exposures by Year of Birth</b>					
	1996	1997	1998	1999	2000
<b>Newark</b>					
Exposed	75	71	62	57	31
Known Infected	9	9	6	<5	<5
<b>Essex County</b>					
Exposed	106	101	84	75	49
Known Infected	15	14	8	<5	<5

**Exposed-** Exposure or being exposed refers to those babies born to HIV infected mothers who potentially come in contact with the virus during pregnancy while in the mother's womb as well as at the time of delivery when the baby passes down the birth canal. Live born babies who have potentially been exposed to HIV are followed from birth every 6 months by the NJDHSS until their infection or non-infection with the virus is known.

**Known Infected-** Since the NJDHSS follows up on all newborns known to be exposed to HIV, it is possible through communication with pediatricians to determine how many children actually became infected with the virus. The rate of transmission of HIV from infected mother to baby has declined statewide over the years from 21% in 1993 to 8% in 1998. This means that in 1998 here in New Jersey, 92% of babies born to HIV infected mothers were totally free of the HIV virus. Normally exposed babies get tested frequently in order to discover HIV infection as soon as possible. Once it is determined by the pediatrician that the baby is known to be HIV infected, treatment regimens can be started.

*The number of children exposed includes the number that are known infected.*

	<u>1999</u>	<u>2000</u>
<b>Newark's share of Essex County Children Ages 5 to 19 Living with HIV/AIDS</b>	<b>64%</b>	<b>63%</b>
<b>Newark's share of New Jersey Children Ages 5 to 19 Living with HIV/AIDS</b>	<b>22%</b>	<b>22%</b>

Source: New Jersey Division of AIDS Prevention and Control, HIV/AIDS Surveillance Program, NJ Department of Health and Senior Services

Reported Cases of Sexually Transmitted Diseases for Children 19 and Under						
		1996	1997	1998	1999	% Change 1996 to 1999
<b>Newark</b>	<b>Chlamydia</b>	863	917	837	895	+3.7%
	<b>Gonorrhea</b>	246	728	566	554	+125.2%
	<b>Syphilis</b>	14	50	48	27	+92.9%
	<b>Total</b>	1,123	1,695	1,451	1,476	+31.4%
<b>Essex County</b>	<b>Chlamydia</b>	1,330	1,444	1,380	1,407	+5.8%
	<b>Gonorrhea</b>	387	1,048	840	841	+117.3%
	<b>Syphilis</b>	18	71	72	40	+122.2%
	<b>Total</b>	1,735	2,563	2,292	2,288	+31.9%
<b>New Jersey</b>	<b>Chlamydia</b>	5,266	5,532	5,208	5,178	-1.7%
	<b>Gonorrhea</b>	1,490	2,921	2,487	2,425	+62.8%
	<b>Syphilis</b>	57	180	153	98	+71.9%
	<b>Total</b>	6,813	8,633	7,848	7,701	+13.0%

Source: STD Prevention and Control Program, NJ Department of Health and Senior Services



### 1999 Newark STD Cases by Race, Ethnicity and Gender

	Male				Female			
	Hispanic	Non-Hispanic	Unknown	Total	Hispanic	Non-Hispanic	Unknown	Total
<b>White</b>	5	2	4	<b>11</b>	18	4	5	<b>27</b>
<b>Black</b>	1	118	101	<b>220</b>	7	409	184	<b>600</b>
<b>Asian and Pacific Islander</b>	0	0	0	<b>0</b>	0	4	0	<b>4</b>
<b>Other</b>	8	1	1	<b>10</b>	23	5	1	<b>29</b>
<b>Unknown</b>	3	0	55	<b>58</b>	19	7	491	<b>517</b>
<b>Total</b>	<b>17</b>	<b>121</b>	<b>161</b>	<b>299</b>	<b>67</b>	<b>429</b>	<b>681</b>	<b>1,177</b>

Source: STD Prevention and Control Program, NJ Department of Health and Senior Services

	<b>1996</b>	<b>1997</b>	<b>1998</b>	<b>1999</b>
Newark's Share of Essex County's Chlamydia Cases	64.9%	63.5%	60.6%	63.6%
Newark's Share of Essex County's Gonorrhea Cases	63.6%	69.5%	67.4%	65.9%
Newark's Share of Essex County's Syphilis Cases	77.8%	70.4%	66.7%	67.5%
Newark's Share of Essex County's Total STD Cases	64.7%	66.1%	63.3%	64.5%
Newark's Share of New Jersey's Chlamydia Cases	16.4%	16.6%	16.1%	17.3%
Newark's Share of New Jersey's Gonorrhea Cases	16.5%	24.9%	22.8%	22.8%
Newark's Share of New Jersey's Syphilis Cases	24.6%	27.8%	31.4%	27.6%
Newark's Share of New Jersey's Total STD Cases	16.5%	19.6%	18.5%	19.2%

Source: STD Prevention and Control Program, NJ Department of Health and Senior Services

**Vaccination Coverage Levels of Two Year Olds  
Percent Receiving 4:3:1 Series**

	1995	1996	1997	1998	1999	Change 1995 to 1999
<b>Newark</b>	60%	63%	70%	66%	69%	+9%
<b>New Jersey</b>	76%	78%	78%	85%	81%	+5%
<b>United States</b>	75%	78%	78%	81%	80%	+5%

**Newark's 1999 estimated coverage level was the third lowest compared to all other states and selected geographic areas.**  
**Since 1996, Newark's estimated coverage level has ranked among the lowest three states and selected geographic areas.**

Note: The Centers for Disease Control defines two year olds as children ages 19-35 months old. The 4:3:1 series includes 4 doses of the tetanus, diphtheria, and pertussis vaccine; 3 doses of the poliovirus vaccine; and 1 dose of the measles-mumps-rubella vaccine.

Source: Centers for Disease Control, National Immunization Survey, Morbidity and Mortality Weekly Report, June, 1996, July,



Source: Centers for Disease Control, National Immunization Survey, Morbidity and Mortality Weekly Report, June, 1996, July, 1997, July, 1998, September, 1999, and July, 2000.

## ACNJ Child Health Survey in the Newark Public Schools

<b>Major Health Problems and Issues Facing Children as Identified by School Nurses in the Newark Public Schools</b>		
Problem/Issue	% of Nurses Who Identified the Problem/Issue	
	1999	2000
<b>Asthma</b>	<b>97.8%</b>	<b>98.1%</b>
<b>Dental Health</b>	<b>82.6%</b>	<b>84.6%</b>
<b>Vision Problems</b>	<b>73.9%</b>	<b>67.3%</b>
<b>Headaches</b>	<b>67.4%</b>	<b>59.6%</b>
<b>Poor Hygiene</b>	<b>65.2%</b>	<b>59.6%</b>
<b>Mental Health</b>	<b>58.7%</b>	<b>42.3%</b>
<b>Cold/Flu</b>	<b>58.7%</b>	<b>65.4%</b>
<b>Lack of Health Insurance</b>	<b>56.5%</b>	<b>50.0%</b>
<b>Allergy</b>	<b>52.2%</b>	<b>44.2%</b>
<b>Accidental Injuries</b>	<b>50.0%</b>	<b>55.8%</b>
<b>Dressed Inappropriately</b>	<b>50.0%</b>	<b>38.5%</b>
<b>Malnutrition/Hunger</b>	<b>50.0%</b>	<b>42.3%</b>
<b>Stress</b>	<b>47.8%</b>	<b>32.7%</b>
<b>Lack of Immunizations</b>	<b>45.7%</b>	<b>32.7%</b>

<b><u>Most Frequently Occurring Child Health Conditions</u></b>	
Top four child health conditions identified by Newark Public Schools nurses that occur with the most frequency:	
1999	2000
Asthma	Asthma
Headaches	Behavioral/Social Issues
Dental Health	Stomach Aches
Vision Problems	Accidental Injuries and Dental Health

<b><u>Child Health Conditions Needing Immediate Attention</u></b>	
Top two child health conditions identified by Newark Public Schools nurses as needing immediate and increased attention due to their severity and/or growing frequency:	
1999	2000
1. Asthma	1. Asthma
2. Dental Health	2. Dental Health

<b><u>Recommendations</u></b>
<p>Most frequent recommendations made by Newark Public Schools nurses to effectively address health problems facing Newark's children:</p> <ol style="list-style-type: none"> <li>1. Increased parental education and involvement in child's health care.</li> <li>2. Better access to health care services for children.</li> <li>3. Increased and improved dental/vision care for children.</li> </ol>

Source: Child Health Survey of Newark Public Schools Nurses, Association for Children of New Jersey, 1999 and 2000.

Note: See glossary for further information about this survey.

<b>Newark School Based Youth Services Program Health Clinic Data</b>		
	December 1998 - December 1999	January 2000 - December 2000
Total Number of Medical Contacts	1,680	3,227
Total Number of Dental Contacts	1,293	1,578
Total Number of Social Contacts*	1,626	1,439
Average Percentage of Children Enrolled in School Based Youth Services Program (Parental Consent for Services Provided)	92%	93%
<p>The School Based Youth Services Program provides health care services to students from Pre-K to 8th Grade including medical and dental care, as well as health education and prevention programs. All children in each school are eligible for services as long as a parental consent form is provided. Health Clinics are located at Quitman Street School, Dayton Street School and George Washington Carver School. A fourth health clinic at Malcolm X Shabazz High School opened in 2001.</p> <p>Source: Community Clinical Services Department, Children's Hospital of New Jersey at Newark Beth Israel Medical Center.  Note: The number of contacts may include multiple contacts per child.  * Social Contacts refer to visits with a social worker. A child can initiate a social contact, or can be referred to a social worker by parents, principals or teachers.</p>		

**Kids Corporation Health Center Data**

Between September 18, 2000 and March 15, 2001 the Kids Corporation Pediatric Nurses provided health screenings to 1,038 students in the fourth and fifth grades throughout Newark.  
16% of the children screened had dental problems, 12% were obese, 11% had vision problems, and 6% had no health insurance.

Source: Kids Corporation, Newark, NJ

# MENTAL HEALTH

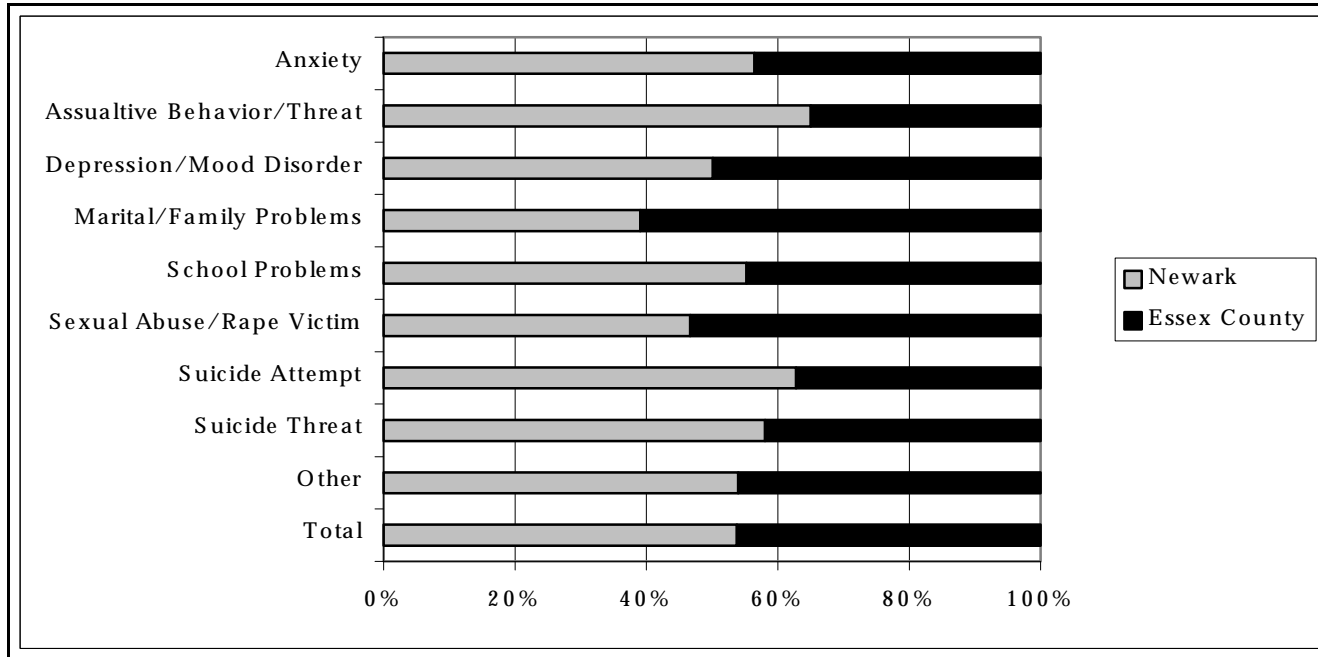
Primary Presenting Problems of Children Served by State Funded Mental Health Programs*								
	Newark				Essex County			
	1996	1997	1998	1999	1996	1997	1998	1999
Anxiety	67	64	74	61	110	102	114	108
Assaultive Behavior/ Threat	108	125	173	203	216	238	291	312
Depression/ Mood Disorder	252	204	226	219	484	392	457	437
Marital/ Family Problem	182	118	119	105	318	273	228	269
School Problems	266	240	186	222	418	393	387	402
Sexual Abuse/ Rape Victim	31	32	26	21	71	65	52	45
Suicide Attempt	37	40	47	49	86	79	86	78
Suicide Threat	77	82	105	79	170	204	181	136
Other	352	334	350	386	769	736	643	715
<b>Total</b>	<b>1,372</b>	<b>1,239</b>	<b>1,306</b>	<b>1,345</b>	<b>2,642</b>	<b>2,482</b>	<b>2,439</b>	<b>2,502</b>

\*Note: These numbers represent the primary presenting problem of children who received services from fully of partially state funded mental health programs. These numbers do not represent the total number of children in Newark with mental health problems. See glossary for further explanation.

Source: Division of Mental Health Services, NJ Department of Human Services



### Newark's Share of Essex County's 1999 Primary Presenting Problems\*



\*Note: These numbers represent the primary presenting problem of children who received services from fully of partially state funded mental health programs. These numbers do not represent the total number of children in Newark with mental health problems. See glossary for further explanation.  
Source: Division of Mental Health Services, NJ Department of Human Services

# ENVIRONMENTAL HEALTH

Lead Levels for <u>Newark Residents</u> Under 18 Who Have Been Tested For Lead Poisoning in Fiscal Year 2000									
Newark Zip Code	<10 µg/dL	10 –14 µg/dL	15 –19 µg/dL	20 –24 µg/dL	25 –39 µg/dL	40+ µg/dL	Total between 10 and 20 µg/dL	Total with 20 or Greater µg/dL	Total Number Tested
07101	231	20	7	1	1	0	27	2	260
07102	569	49	28	5	3	0	77	8	654
07103	885	156	70	47	32	5	226	84	1,195
07104	1,090	64	23	12	18	3	87	33	1,210
07105	1,007	11	7	3	3	0	18	6	1,031
07106	831	91	41	26	24	5	132	55	1,018
07108	725	103	59	38	36	6	162	80	967
07112	674	101	47	41	31	10	148	82	904
07114	226	8	5	2	2	0	13	4	243
<b>Total</b>	<b>6,238</b>	<b>603</b>	<b>287</b>	<b>175</b>	<b>150</b>	<b>29</b>	<b>890</b>	<b>354</b>	<b>7,482</b>

(µg/dL) Refers to micrograms of lead per decileter of whole blood. The Centers for Disease Control and Prevention consider any child with a blood lead level equal to or greater than 10 µg/dL to be suffering from childhood lead poisoning and in need of corrective follow up treatment. Children with blood lead levels between 10 and 20 µg/dL are to be provided with follow up testing and their families are to be provided with lead education and, if necessary, social referrals. Children with blood lead levels over 20 µg/dL are to be provided with appropriate medical treatment, case management and an investigation to determine the source of the lead.

<b>Lead Levels for Children Under 18 Who Have Been Tested in Newark For Lead Poisoning in Fiscal Year 2000*</b>									
<b>Newark Zip Code</b>	<b>&lt;10 µg/dL</b>	<b>10 –14 µg/dL</b>	<b>15 –19 µg/dL</b>	<b>20 –24 µg/dL</b>	<b>25 –39 µg/dL</b>	<b>40+ µg/dL</b>	<b>Total between 10 and 20 µg/dL</b>	<b>Total with 20 or Greater µg/dL</b>	<b>Total Number Tested</b>
<b>07101</b>	<b>1</b>	<b>0</b>	<b>0</b>	<b>0</b>	<b>0</b>	<b>0</b>	<b>0</b>	<b>0</b>	<b>1</b>
<b>07102</b>	<b>517</b>	<b>39</b>	<b>18</b>	<b>0</b>	<b>1</b>	<b>1</b>	<b>57</b>	<b>2</b>	<b>576</b>
<b>07103</b>	<b>1,473</b>	<b>165</b>	<b>83</b>	<b>3</b>	<b>1</b>	<b>0</b>	<b>248</b>	<b>4</b>	<b>1,725</b>
<b>07104</b>	<b>317</b>	<b>12</b>	<b>3</b>	<b>0</b>	<b>0</b>	<b>0</b>	<b>15</b>	<b>0</b>	<b>332</b>
<b>07105</b>	<b>707</b>	<b>14</b>	<b>6</b>	<b>2</b>	<b>0</b>	<b>0</b>	<b>20</b>	<b>2</b>	<b>729</b>
<b>07106</b>	<b>111</b>	<b>20</b>	<b>6</b>	<b>0</b>	<b>0</b>	<b>0</b>	<b>26</b>	<b>0</b>	<b>137</b>
<b>07108</b>	<b>11</b>	<b>1</b>	<b>0</b>	<b>0</b>	<b>0</b>	<b>0</b>	<b>1</b>	<b>0</b>	<b>12</b>
<b>07112</b>	<b>794</b>	<b>91</b>	<b>25</b>	<b>1</b>	<b>2</b>	<b>0</b>	<b>116</b>	<b>3</b>	<b>913</b>
<b>07114</b>	<b>7</b>	<b>0</b>	<b>0</b>	<b>0</b>	<b>0</b>	<b>0</b>	<b>0</b>	<b>0</b>	<b>7</b>
<b>Total</b>	<b>3,938</b>	<b>342</b>	<b>141</b>	<b>6</b>	<b>4</b>	<b>1</b>	<b>483</b>	<b>11</b>	<b>4,432</b>

**\*Note: These numbers refer to children whose place of residence is unknown. They have been tested in Newark and may be residents of Newark or surrounding areas.**

Source: NJ Department of Health and Senior Services

**Lead Levels in Newark's Drinking Water**

<b>June 2000</b>	<b>0.011 mg of Lead Per 1 L of Water (mg/L)</b>
<b>March-April, 1998</b>	<b>0.0126 mg of Lead Per 1 L of Water (mg/L)</b>
<b>November, 1997</b>	<b>0.0096 mg of Lead Per 1 L of Water (mg/L)</b>
<b>January - June, 1992</b>	<b>0.0271 mg of Lead Per 1 L of Water (mg/L)</b>

***Acceptable Limit for Lead in Drinking Water.....0.0150 mg of Lead Per 1 L of Water (mg/L)***



Source: Division of Sewers and Water Supply, Newark Department of Water and Sewer Utilities

<b>Number of Waste Sites Reported to the Agency for Toxic Substances and Disease Registry (ATSDR)</b>						
	1996	1997	1998	1999	2000	% Change 1996 to 2000
Newark	9	10	12	8	9	0%
New Jersey	169	186	204	214	223	+32%

**The ATSDR has the responsibility to conduct public health related activities at these sites.**

***114 out of the 223 sites in New Jersey are on the National Priorities List, meaning that they are most in need of cleanup. Two (2) of these 114 sites are in Newark.***

Note: "HazDat is a scientific and administrative database developed to provide information on the release of hazardous substances from Superfund sites or from emergency events and on the health effects of hazardous substances on human populations. HazDat contains environmental and health data found in the Agency for Toxic Substances and Disease Registry public health assessments, health consultations, toxicological profiles, and other documents." - Agency for Toxic Substances and Disease Registry, July 1995.  
Source: Agency for Toxic Substances and Disease Registry, HazDat, 1996, 1997, 1998, 1999, 2000.

**Number of Newark Vacant Lots Converted Into Active Community or School Gardens**

As of November, 2000:

The Greater Newark Conservancy (GNC) created and maintains **12** Community Gardens on land that used to be vacant lots.  
The GNC maintains outdoor gardens called Living Labs on former vacant lots adjacent to **13** Newark schools.  
The GNC provided and maintains indoor growing units called Grow Labs in **25** Newark Schools.

The Greater Newark Conservancy and collaborating partners coordinated these vacant lot conversions into gardens.

Source: The Greater Newark Conservancy

# EDUCATION

<b>Number of Students Enrolled in the Newark Public Schools</b>			
	<b>Elementary School</b>	<b>High School</b>	<b>Total Enrollment*</b>
<b>1999-2000</b>	32,387	9,714	42,101
<b>1998-1999</b>	33,454	9,738	43,924
<b>1997-1998</b>	33,762	10,032	44,573
<b>1996-1997</b>	34,759	10,222	44,981
<b>1995-1996</b>	34,783	11,022	45,805
<b>% Change 1995-1999</b>	-3.8%	-11.6%	-4.1%

\* Note: The Total Enrollment includes Newark evening students, home instruction and pre-Kindergarten students.  
Source: The Newark Public Schools

<b>Student Ethnic Breakdown in the Newark Public Schools</b>				
	<b>Black</b>	<b>Hispanic</b>	<b>White</b>	<b>Other</b>
<b>1999-2000</b>	26,075	11,986	3,681	359
<b>1998-1999</b>	27,935	12,055	3,575	359
<b>1997-1998</b>	28,102	12,018	3,651	802
<b>1996-1997</b>	28,614	12,219	3,757	391
<b>1995-1996</b>	29,018	12,458	3,956	373

\* Student ethnic breakdown for 1997-1998 and 1998-1999 includes Newark evening students, home instruction and pre-Kindergarten students in the Newark Public Schools which calculates to a total enrollment of 44,573 for the 1997-1998 school year and 43,924 for the 1998-1999 school year.  
Source: The Newark Public Schools

<p style="text-align: center;"><b><u>Newark Public Schools Attendance Rate</u></b></p> <table border="0"> <tr> <td style="text-align: center;"><b><u>1996-1997</u></b></td> <td style="text-align: center;"><b><u>1997-1998</u></b></td> <td style="text-align: center;"><b><u>1998-1999</u></b></td> <td style="text-align: center;"><b><u>1999-2000</u></b></td> </tr> <tr> <td style="text-align: center;">90.2%</td> <td style="text-align: center;">90.9%</td> <td style="text-align: center;">90.5%</td> <td style="text-align: center;">90.1%</td> </tr> </table>	<b><u>1996-1997</u></b>	<b><u>1997-1998</u></b>	<b><u>1998-1999</u></b>	<b><u>1999-2000</u></b>	90.2%	90.9%	90.5%	90.1%	<p style="text-align: center;"><b><u>Number of Violent Incidents and Weapon Possessions in the Newark Public Schools</u></b></p> <table border="0"> <tr> <td>1999-2000.....</td> <td style="text-align: right;">366</td> </tr> <tr> <td>1998-1999.....</td> <td style="text-align: right;">231</td> </tr> <tr> <td>1996-1997.....</td> <td style="text-align: right;">366</td> </tr> </table>	1999-2000.....	366	1998-1999.....	231	1996-1997.....	366																			
<b><u>1996-1997</u></b>	<b><u>1997-1998</u></b>	<b><u>1998-1999</u></b>	<b><u>1999-2000</u></b>																															
90.2%	90.9%	90.5%	90.1%																															
1999-2000.....	366																																	
1998-1999.....	231																																	
1996-1997.....	366																																	
<p style="text-align: center;"><b><u>Number of Newark Public School Students Receiving a Reduced or Free Breakfast/Lunch at School</u></b></p> <table border="0"> <tr> <td>1999-2000 .....</td> <td style="text-align: right;">35,053</td> </tr> <tr> <td>1998-1999 .....</td> <td style="text-align: right;">35,172</td> </tr> <tr> <td>1997-1998 .....</td> <td style="text-align: right;">36,437</td> </tr> <tr> <td>1996-1997 .....</td> <td style="text-align: right;">27,483</td> </tr> <tr> <td>1995-1996 .....</td> <td style="text-align: right;">33,080</td> </tr> <tr> <td><b>% Change 1995 to 2000.....</b></td> <td style="text-align: right;"><b>+6%</b></td> </tr> </table> <p><i>83.2% of Newark Public School Students Received a Free or Reduced Breakfast/Lunch in the 1999-2000 School Year.</i></p>	1999-2000 .....	35,053	1998-1999 .....	35,172	1997-1998 .....	36,437	1996-1997 .....	27,483	1995-1996 .....	33,080	<b>% Change 1995 to 2000.....</b>	<b>+6%</b>	<p style="text-align: center;"><b><u>Student Suspensions in the Newark Public Schools</u></b></p> <table border="0"> <tr> <td></td> <td></td> <td></td> <td></td> <td style="text-align: center;"><b>% Change</b></td> </tr> <tr> <td style="text-align: center;"><b><u>1995-1996</u></b></td> <td style="text-align: center;"><b><u>1996-1997</u></b></td> <td style="text-align: center;"><b><u>1997-1998</u></b></td> <td style="text-align: center;"><b><u>1998-1999</u></b></td> <td style="text-align: center;"><b><u>1995-1999</u></b></td> </tr> <tr> <td style="text-align: center;">1,855</td> <td style="text-align: center;">2,354</td> <td style="text-align: center;">2,410</td> <td style="text-align: center;">2,402</td> <td style="text-align: center;">+29.5%</td> </tr> </table> <p style="text-align: center;"><b><u>Number of Students in Newark Public Schools After School Youth Development Program</u></b></p> <table border="0"> <tr> <td>1999-2000.....</td> <td style="text-align: right;">7,498</td> </tr> <tr> <td>1998-1999.....</td> <td style="text-align: right;">6,500</td> </tr> <tr> <td>1997-1998.....</td> <td style="text-align: right;">6,500</td> </tr> </table>					<b>% Change</b>	<b><u>1995-1996</u></b>	<b><u>1996-1997</u></b>	<b><u>1997-1998</u></b>	<b><u>1998-1999</u></b>	<b><u>1995-1999</u></b>	1,855	2,354	2,410	2,402	+29.5%	1999-2000.....	7,498	1998-1999.....	6,500	1997-1998.....	6,500
1999-2000 .....	35,053																																	
1998-1999 .....	35,172																																	
1997-1998 .....	36,437																																	
1996-1997 .....	27,483																																	
1995-1996 .....	33,080																																	
<b>% Change 1995 to 2000.....</b>	<b>+6%</b>																																	
				<b>% Change</b>																														
<b><u>1995-1996</u></b>	<b><u>1996-1997</u></b>	<b><u>1997-1998</u></b>	<b><u>1998-1999</u></b>	<b><u>1995-1999</u></b>																														
1,855	2,354	2,410	2,402	+29.5%																														
1999-2000.....	7,498																																	
1998-1999.....	6,500																																	
1997-1998.....	6,500																																	
<p style="text-align: center;"><b><u>Number of Gifted and Talented Students in the Newark Public Schools</u></b></p> <table border="0"> <tr> <td></td> <td></td> <td></td> <td style="text-align: center;"><b>% Change</b></td> </tr> <tr> <td style="text-align: center;"><b><u>1997-1998</u></b></td> <td style="text-align: center;"><b><u>1998-1999</u></b></td> <td style="text-align: center;"><b><u>1999-2000</u></b></td> <td style="text-align: center;"><b><u>1997-2000</u></b></td> </tr> <tr> <td style="text-align: center;">725</td> <td style="text-align: center;">1,977</td> <td style="text-align: center;">1,876</td> <td style="text-align: center;">+158.8%</td> </tr> </table>				<b>% Change</b>	<b><u>1997-1998</u></b>	<b><u>1998-1999</u></b>	<b><u>1999-2000</u></b>	<b><u>1997-2000</u></b>	725	1,977	1,876	+158.8%	<p style="text-align: center;"><b><u>Number of Homeless Students in the Newark Public Schools</u></b></p> <table border="0"> <tr> <td>1999-2000 .....</td> <td style="text-align: right;">347</td> </tr> <tr> <td>1998-1999 .....</td> <td style="text-align: right;">490</td> </tr> <tr> <td>1997-1998 .....</td> <td style="text-align: right;">476</td> </tr> <tr> <td>1996-1997 .....</td> <td style="text-align: right;">421</td> </tr> <tr> <td>1995-1996 .....</td> <td style="text-align: right;">418</td> </tr> <tr> <td><b>%Change 1995-1999.....</b></td> <td style="text-align: right;"><b>-17.0%</b></td> </tr> </table>	1999-2000 .....	347	1998-1999 .....	490	1997-1998 .....	476	1996-1997 .....	421	1995-1996 .....	418	<b>%Change 1995-1999.....</b>	<b>-17.0%</b>									
			<b>% Change</b>																															
<b><u>1997-1998</u></b>	<b><u>1998-1999</u></b>	<b><u>1999-2000</u></b>	<b><u>1997-2000</u></b>																															
725	1,977	1,876	+158.8%																															
1999-2000 .....	347																																	
1998-1999 .....	490																																	
1997-1998 .....	476																																	
1996-1997 .....	421																																	
1995-1996 .....	418																																	
<b>%Change 1995-1999.....</b>	<b>-17.0%</b>																																	

Source: The Newark Public Schools

## Newark Public Schools Proficiency and Aptitude Test Scores

<b>Elementary School Proficiency Assessment (ESPA)</b> <i>The ESPA is administered to 4th grade students.</i>						
	<b>1998-1999</b>			<b>1999-2000</b>		
	<b>Partially Proficient</b>	<b>Proficient</b>	<b>Advanced Proficient</b>	<b>Partially Proficient</b>	<b>Proficient</b>	<b>Advanced Proficient</b>
<b>Language Arts - Newark</b>	79%	21%	0%	69%	31%	1%
<b>Language Arts - New Jersey</b>	59%	41%	1%	39%	57%	4%
<b>Mathematics - Newark</b>	71%	23%	6%	67%	28%	6%
<b>Mathematics - New Jersey</b>	40%	44%	16%	29%	50%	22%
<b>Science - Newark</b>	46%	47%	7%	43%	49%	8%
<b>Science - New Jersey</b>	14%	52%	34%	10%	57%	32%

<b>Grade Eight Proficiency Assessment (GEPA)</b> <i>The GEPA is administered to 8th grade students.</i>						
	<b>1998-1999</b>			<b>1999-2000</b>		
	<b>Partially Proficient</b>	<b>Proficient</b>	<b>Advanced Proficient</b>	<b>Partially Proficient</b>	<b>Proficient</b>	<b>Advanced Proficient</b>
<b>Language Arts - Newark</b>	47%	52%	1%	53%	47%	1%
<b>Language Arts - New Jersey</b>	22%	71%	7%	16%	76%	7%
<b>Mathematics - Newark</b>	76%	22%	3%	78%	19%	3%
<b>Mathematics - New Jersey</b>	38%	43%	19%	33%	48%	20%
<b>Science - Newark</b>	N/a	N/a	N/a	71%	27%	1%
<b>Science - New Jersey</b>	N/a	N/a	N/a	20%	58%	22%

Note: "Partially Proficient" means that a child's score did not meet the state's minimum level of proficiency, based on this test administration, and may need some type of additional instructional support. The ESPA and GEPA are not promotion tests. Students do not have to "pass" the ESPA or GEPA to proceed to the next grade. These scores are for general education and do not include special education students or limited English proficient students. See glossary for further information.

Source: The Newark Public Schools, NJ School Report Card 1998-1999 and 1999-2000 Updates, NJ Department of Education

<b>Newark Public Schools High School Proficiency Test (HSPT)</b> <i>The HSPT is administered to 11th grade students. The state specifies that a score of 85% is considered the minimum level of proficiency.</i>										
	1995-1996		1996-1997		1997-1998		1998-1999		1999-2000	
	Passed	Failed	Passed	Failed	Passed	Failed	Passed	Failed	Passed	Failed
<b>Reading</b>	61%	39%	61%	40%	63%	37%	54%	46%	56%	44%
<b>Writing</b>	67%	33%	63%	37%	61%	39%	66%	34%	59%	41%
<b>Mathematics</b>	60%	40%	62%	38%	50%	50%	57%	43%	60%	40%

Source: The Newark Public Schools, NJ School Report Card 1999-2000 Update, NJ Department of Education

<b>Newark Public Schools Scholastic Aptitude Test (SAT) Average Scores</b>				
School	1998-1999 School Year		1999-2000 School Year	
	Math SAT Score	Verbal SAT Score	Math SAT Score	Verbal SAT Score
<b>Arts High School</b>	<b>408</b>	<b>417</b>	<b>424</b>	<b>413</b>
<b>Barringer High School</b>	<b>364</b>	<b>347</b>	<b>356</b>	<b>344</b>
<b>Central High School</b>	<b>350</b>	<b>323</b>	<b>359</b>	<b>305</b>
<b>East Side High School</b>	<b>406</b>	<b>377</b>	<b>411</b>	<b>374</b>
<b>West Kinney Alternative High School</b>	<b>344</b>	<b>354</b>	<b>406</b>	<b>399</b>
<b>Malcolm X Shabazz High School</b>	<b>349</b>	<b>347</b>	<b>349</b>	<b>335</b>
<b>Science High School</b>	<b>489</b>	<b>489</b>	<b>494</b>	<b>463</b>
<b>Technology High School</b>	<b>370</b>	<b>357</b>	<b>356</b>	<b>347</b>
<b>University High School</b>	<b>464</b>	<b>442</b>	<b>459</b>	<b>462</b>
<b>Weequahic High School</b>	<b>366</b>	<b>362</b>	<b>356</b>	<b>325</b>
<b>West Side High School</b>	<b>338</b>	<b>346</b>	<b>367</b>	<b>349</b>

Note: 1998-1999 New Jersey Average SAT Scores: Math - 513, Verbal - 496, 1999-2000 New Jersey Average SAT Scores: Math - 516, Verbal - 496

Source: NJ School Report Card 1999-2000 Update, NJ Department of Education

<b>Dropout Report for High Schools in the Newark Public Schools</b>			
<b>Year</b>	<b>Total Enrollment</b>	<b>Total Number of Dropouts</b>	<b>Percent of Dropouts</b>
<b>1998-1999</b>	9,738	779	8.0%
<b>1997-1998</b>	10,032	712	7.1%
<b>1996-1997</b>	10,222	715	7.0%
<b>1995-1996</b>	11,022	881	8.0%
<b>1994-1995</b>	10,830	914	8.4%
<b>1993-1994</b>	10,803	886	8.2%
<b>1992-1993</b>	11,360	1,103	9.7%

Note: This report indicates the number of students in all high school grades who dropped out of high school in each given year.  
Source: The Newark Public Schools

<b>Newark Public Schools High School Graduation Rates</b>	
<b>Year</b>	<b>Rate</b>
1998-1999	41%
1997-1998	40%
1996-1997	41%

Note: This data indicates the average graduation rates for Newark High School students. See Glossary for further information.  
Source: Center for Government Services, Edward J. Bloustein School of Planning and Public Policy, Rutgers University).

<b>Number of Newark Children Who Participated in Hands-on Education Programs at the New Jersey Historical Society</b>		
<b>1998</b>	<b>1999</b>	<b>2000</b>
<b>5,392</b>	<b>6,373</b>	<b>6,057</b>

Source: New Jersey Historical Society



**Post Graduation Plans of Newark Public Schools High School Graduates of the Classes of 1999 and 2000**

	4 Year College/ University		2 Year College		Other College		Other Post Secondary School		Military		Full Time Employment		Unemployed		Other/ Unknown	
	1999	2000	1999	2000	1999	2000	1999	2000	1999	2000	1999	2000	1999	2000	1999	2000
<b>Arts High School</b>	<b>65%</b>	<b>67%</b>	<b>10%</b>	<b>10%</b>	<b>0%</b>	<b>0%</b>	<b>16%</b>	<b>12%</b>	<b>0%</b>	<b>0%</b>	<b>6%</b>	<b>11%</b>	<b>0%</b>	<b>0%</b>	<b>3%</b>	<b>0%</b>
<b>Barringer High School</b>	<b>31%</b>	<b>19%</b>	<b>41%</b>	<b>44%</b>	<b>3%</b>	<b>0%</b>	<b>12%</b>	<b>9%</b>	<b>0%</b>	<b>0%</b>	<b>9%</b>	<b>17%</b>	<b>0%</b>	<b>1%</b>	<b>4%</b>	<b>10%</b>
<b>Central High School</b>	<b>17%</b>	<b>28%</b>	<b>8%</b>	<b>9%</b>	<b>0%</b>	<b>2%</b>	<b>25%</b>	<b>2%</b>	<b>0%</b>	<b>0%</b>	<b>24%</b>	<b>0%</b>	<b>13%</b>	<b>0%</b>	<b>13%</b>	<b>59%</b>
<b>East Side High School</b>	<b>19%</b>	<b>22%</b>	<b>37%</b>	<b>33%</b>	<b>0%</b>	<b>0%</b>	<b>7%</b>	<b>7%</b>	<b>0%</b>	<b>0%</b>	<b>24%</b>	<b>36%</b>	<b>0%</b>	<b>0%</b>	<b>13%</b>	<b>2%</b>
<b>Malcolm X Shabazz High School</b>	<b>35%</b>	<b>43%</b>	<b>26%</b>	<b>32%</b>	<b>0%</b>	<b>0%</b>	<b>7%</b>	<b>8%</b>	<b>0%</b>	<b>0%</b>	<b>8%</b>	<b>18%</b>	<b>0%</b>	<b>0%</b>	<b>24%</b>	<b>0%</b>
<b>Science High School</b>	<b>75%</b>	<b>72%</b>	<b>8%</b>	<b>12%</b>	<b>0%</b>	<b>0%</b>	<b>2%</b>	<b>7%</b>	<b>0%</b>	<b>0%</b>	<b>0%</b>	<b>4%</b>	<b>0%</b>	<b>0%</b>	<b>15%</b>	<b>5%</b>
<b>Technology High School</b>	<b>23%</b>	<b>18%</b>	<b>38%</b>	<b>35%</b>	<b>1%</b>	<b>5%</b>	<b>9%</b>	<b>2%</b>	<b>0%</b>	<b>0%</b>	<b>13%</b>	<b>34%</b>	<b>9%</b>	<b>6%</b>	<b>7%</b>	<b>0%</b>
<b>University High School</b>	<b>72%</b>	<b>72%</b>	<b>10%</b>	<b>10%</b>	<b>0%</b>	<b>0%</b>	<b>6%</b>	<b>4%</b>	<b>0%</b>	<b>0%</b>	<b>4%</b>	<b>14%</b>	<b>0%</b>	<b>0%</b>	<b>8%</b>	<b>0%</b>
<b>Weequahic High School</b>	<b>21%</b>	<b>11%</b>	<b>27%</b>	<b>20%</b>	<b>0%</b>	<b>1%</b>	<b>13%</b>	<b>4%</b>	<b>0%</b>	<b>0%</b>	<b>12%</b>	<b>10%</b>	<b>0%</b>	<b>0%</b>	<b>27%</b>	<b>54%</b>
<b>West Kinney Alternative High School</b>	<b>6%</b>	<b>4%</b>	<b>50%</b>	<b>11%</b>	<b>0%</b>	<b>0%</b>	<b>6%</b>	<b>28%</b>	<b>0%</b>	<b>0%</b>	<b>28%</b>	<b>33%</b>	<b>6%</b>	<b>7%</b>	<b>4%</b>	<b>17%</b>
<b>West Side High School</b>	<b>31%</b>	<b>19%</b>	<b>11%</b>	<b>19%</b>	<b>0%</b>	<b>3%</b>	<b>13%</b>	<b>5%</b>	<b>0%</b>	<b>0%</b>	<b>35%</b>	<b>29%</b>	<b>7%</b>	<b>3%</b>	<b>3%</b>	<b>22%</b>

Note: These numbers are self reported.

Source: NJ School Report Card, 1999-2000 Update, NJ Department of Education

# JUVENILE JUSTICE

	Newark			Essex County			New Jersey		
	Part 1 Juvenile Arrests	Total Juvenile Arrests	Total Arrests	Part 1 Juvenile Arrests	Total Juvenile Arrests	Total Arrests	Part 1 Juvenile Arrests	Total Juvenile Arrests	Total Arrests
1999	502	2,800	32,480	1,406	7,041	43,848	15,358	71,567	407,534
1998	419	2,658	33,146	1,706	8,535	49,933	17,611	76,793	439,249
1997	593	3,554	36,785	1,994	9,664	55,690	20,518	83,417	448,647
1996	614	4,102	28,851	2,214	10,366	49,666	23,085	87,906	431,710
1995	815	4,156	26,401	2,537	11,178	53,946	24,048	91,831	438,502
1994	828	3,777	23,955	2,606	11,410	47,046	23,845	90,201	410,668

Percent change in Newark Total Juvenile Arrests from 1996 to 1999.....-31.7%  
 Percent change in Newark Total Juvenile Arrests from 1994 to 1999.....-25.9%  
 Percent change in Newark Part 1 Juvenile Arrests from 1994 to 1999.....-39.4%  
 Newark's Total Juvenile Arrests % share of Newark's Total Arrests in 1999.....8.6%  
 Newark's Total Juvenile Arrests % share of Newark's Total Arrests in 1996.....14.2%  
 Newark's Total Juvenile Arrests % share of Newark's Total Arrests in 1994.....15.8%  
 Newark's Part 1 Juvenile Arrests % share of Essex County's Part 1 Juvenile Arrests in 1999.....35.7%  
 Newark's Part 1 Juvenile Arrests % share of Essex County's Part 1 Juvenile Arrests in 1996.....27.7%  
 Newark's Part 1 Juvenile Arrests % share of Essex County's Part 1 Juvenile Arrests in 1994.....31.8%  
 Newark's Total Juvenile Arrests % share of Essex County's Total Juvenile Arrests in 1999.....39.8%  
 Newark's Total Juvenile Arrests % share of Essex County's Total Juvenile Arrests in 1996.....39.6%  
 Newark's Total Juvenile Arrests % share of Essex County's Total Juvenile Arrests in 1994.....33.1%  
 Newark's Total Juvenile Arrests % share of New Jersey's Total Juvenile Arrests in 1999.....3.9%  
 Newark's Total Juvenile Arrests % share of New Jersey's Total Juvenile Arrests in 1994.....4.2%

**Note: Part 1 crimes are murder, rape, robbery, aggravated assault, burglary, larceny-theft and motor vehicle theft. These are indictable offenses, and are punishable with at least 1 year or more in jail. The perpetrator must go in front of a Grand Jury in the County Superior Court. Total arrests represent crimes committed by both juveniles and adults.**

Source: Newark Police Department, NJ Uniform Crime Reports 1994-1999.

**ACNJ Child Health Survey of Newark Public School Nurses** - This survey was conducted by Association for Children of New Jersey (ACNJ) in the fall of 1999 and the fall of 2000 with permission from the Newark Public Schools. The purpose of the survey was to identify the current issues and concerns in child health in Newark. The survey was given to all of the Newark Public School nurses (94 nurses). There was a 49% return of the surveys (46 surveys returned) in 1999 and a 55% return (52 surveys returned) in 2000.

**Acquired Immune Deficiency Syndrome (AIDS)** - Number of cases of children under 18 reported to the NJ Department of Health and Senior Services as of June 30, 1996, September 30, 1997, December 31, 1998, and September 30, 1999 (NJ Division of AIDS Prevention and Control, HIV/AIDS Surveillance Program, NJ Department of Health and Senior Services).

**AFDC, Aid to Families with Dependent Children** - The number of children receiving AFDC benefits in 1996 - January, February, March average (NJ Department of Human Services).

**Asthma** - Number of children under 18 who are Newark residents who have been admitted into hospitals through the emergency room with the diagnosis of asthma in 1998, and total number of children who have been admitted to the hospital with the diagnosis of asthma. This does not include emergency room asthma cases which were not admitted to the hospital (NJ Department of Health and Senior Services).

**Birth Data** - The total number of births in 1994, 1995, 1996, 1997 and 1998. The 1997 birth data is from a preliminary 1997 data file. All births to New Jersey residents may not be included in these preliminary numbers (Center for Health Statistics, NJ Department of Health and Senior Services).

**Births to Single Mothers** - Number of mothers not married at time of birth or any time during the pregnancy 1994, 1995, 1996, 1997, and 1998 (Center for Health Statistics, NJ Department of Health and Senior Services).

**Births to Teens** - The number of women under 15 and 15-19 who gave birth in 1994, 1995, 1996, 1997 and 1998 (NJ Department of Health and Senior Services). Children born to adolescents are more likely to be of low birth weight, to have health problems, and to suffer child abuse and neglect. Adolescent parents have fewer educational and career opportunities, thus perpetuating poverty for themselves and their children.

**Child Deaths** - The number of children ages 1-14 who died in 1994, 1995, 1996, 1997 and 1998 (NJ Department of Health and Senior Services). Over one-third of child deaths are caused by motor-vehicle related injuries, infectious diseases, and other injuries, including those related to fires. These causes are related to risks in families and communities, such as the lack of well-developed interventions and services. (See Death Data). Note: Most counties and cities have relatively low numbers of child deaths.

**Children Living with HIV/AIDS** - NJ HIV/AIDS Surveillance Data 1996-2000. Every three months, the NJ Department of Health and Senior Services (NJDHSS) publishes statistics that reflect the number of persons living with HIV/AIDS in NJ by county of residence. These statistics are gathered by matching the state HIV/AIDS Reporting System (HARS) with NJDHSS's Death Certificate Registry on a monthly basis, and recording new deaths in the HARS. This allows NJDHSS to maintain and present current information on those still alive. As of December 31, 2000, just over half (51%) of all NJ residents ever reported with HIV/AIDS were still alive. (NJ Division of AIDS Prevention and Control,

HIV/AIDS Surveillance Program, NJ Department of Health and Senior Services).

**Children Receiving Free and Reduced Lunch/Breakfast** - Number of school age children participating in the National School Lunch Program. This benefit is based on family income guidelines and is not offered in every school district (Newark Public Schools, Bureau of Child Nutrition, NJ Department of Education).

**Density** - Number of people per square mile (U.S. Department of Commerce, Bureau of Census Data, 1990 and 2000).

**Death Data** - The 1994, 1995, 1996 and 1997 death data are from preliminary files. All 1994, 1995, 1996 and 1997 deaths may not be reflected in the preliminary data (Center for Health Statistics, NJ Department of Health and Senior Services).

**Estimated Median Household Income 1997** - (U.S. Census Bureau, Small Area Income and Poverty Estimates Program, Released November 2000).

**Estimated Percent of People of All Ages In Poverty 1997** - (U.S. Census Bureau, Small Area Income and Poverty Estimates Program, Released November 2000).

**Estimated Percent of Children Under Age 18 in Poverty** - (U.S. Census Bureau, Small Area Income and Poverty Estimates Program, Released November 2000).

**Elementary School Proficiency Assessment (ESPA)** - Given to 4th grade students. The ESPA measures what students know and can do in language arts literacy (reading and writing), math and science, three of the content areas covered by the state's higher core curriculum content standards. For more information about the ESPA, visit the NJ Department of Education's website at <http://www.state.nj.us/njded/cccs/index.html> (Newark Public Schools, NJ School Report Card 1998-1999 and 1999-2000 Updates, NJ Department of Education).

**Family Day Care Providers** - A Family Day Care Provider may care for up to five non-resident children in her own home. Programs for Parents recruits, trains, monitors and registers Family Day Care Providers for Newark and Essex County. The registration process is voluntary. Programs for Parents is designated by the NJ Department of Human Services as the Essex County Unified Child Care Agency.

**Federal Earned Income Tax Credit (EITC)** - A tax credit program for very low income working individuals, and low to moderate income working families. For example, a family with two or more children, who earned less than \$30,580 in 1999 can earn a maximum of \$3,816 in EITC (1999 IRS Zip Code Data).

**Food Stamps** - The number of children receiving Food Stamp benefits in 1996 - January, February, March average; 1997, 1998, 1999 and 2000 - March, July, November average (NJ Department of Human Services).

**Grade Eight Proficiency Exam (GEPA)** - Given to 8th Grade students. The GEPA measures what students know and can do in language arts literacy (reading and writing) and math, two of the content areas covered by the state's higher core curriculum content standards. For more information about the GEPA, visit the NJ Department of Education's website at <http://www.state.nj.us/njded/cccs/index.html> (Newark Public Schools, NJ School Report Card 1998-1999 and 1999-2000 Updates, NJ Department of Education).

**High School Graduation Rate** - This data indicates the average graduation rates for Newark High School students. Calculation for rates are as follows: number of graduates for a given year, divided by the number of ninth grade students enrolled as of October 15th, four years earlier. The number of students enrolled four years earlier does not include self-contained special education students, nor does it account for inter-district transfer students (data unavailable from NJDOE). The number of graduates includes some special education students. (Center for Government Services, Edward J. Bloustein School of Planning and Public Policy, Rutgers University).

**High School Proficiency Test (HSPT)** - A statewide assessment test administered in grade 11. It consists of three sections-reading, writing and math. It must be passed as a requirement for a high school diploma. Data represent cumulative percentage of enrolled, eligible students and excludes special education and limited English proficiency students (Newark Public Schools).

**Infant Mortality Rate** - The number of infants per 1,000 who died before their first birthday in 1994, 1995, 1996, 1997 and 1998 (Center for Health Statistics, NJ Department of Health and Senior Services). High rates of infant mortality are indicative of poor access to health care, lack of prenatal care, birth defects (including those caused by prenatal exposure to alcohol and drugs), and high rates of poverty.

**Juvenile Arrest** - The number of juveniles arrested (ages 10-17) in 1994, 1995, 1996, 1997, 1998 and 1999. The increase in Newark total arrests or the decline in Newark juvenile arrests could be attributed to increased numbers of police officers patrolling the city ("Crime in New Jersey, Uniform Crime Report" and Newark Police Department).

**Lead Poisoning** - ( $\mu\text{g}/\text{dL}$ ) Refers to micrograms of lead per decileter of whole blood. The Centers for Disease Control and Prevention consider any child with a blood lead level equal or greater than  $10 \mu\text{g}/\text{dL}$  to be suffering from childhood lead poisoning and in need of corrective follow up treatment. Children with blood lead levels between 10 and  $20 \mu\text{g}/\text{dL}$  are to be provided with follow up testing and their families are to be provided with lead education and, if necessary, social referrals. Children with blood lead levels over  $20 \mu\text{g}/\text{dL}$  are to be provided with appropriate medical treatment, case management and an investigation to determine the source of the lead. NJ Department of Health and Senior Services

**Licensed Child Care Centers** - Number of licensed child care centers in Newark that are currently licensed by the NJ Bureau of Licensing at the Division of Youth and Family Services (Division of Youth and Family Services, NJ Department of Human Services).

**Low Birth Weight** - Percentage of babies born weighing below 2,500 grams (5.5 lbs.) in 1994, 1995, 1996, 1997 and 1998 (NJ Department of Health and Senior Services). These babies have a higher death rate (see Infant Mortality Indicator) and are more likely to develop disabilities which create a greater need for medical services, special education, and lifelong support services.

**Low Birth Weight by Mother Drinking Alcohol During Pregnancy** - Number of low birth weight babies in 1997 whose mothers reported drinking alcohol during the pregnancy. These numbers are self reported (NJ Department of Health and Senior Services Birth Certificate File and Center for Health Statistics).

**Low Birth Weight by Mother Smoking During Pregnancy** - Number of low birth weight babies in 1997 and 1998 whose mothers reported smoking during the pregnancy. These numbers are self reported (NJ Department of Health and Senior Services Birth Certificate File and

Center for Health Statistics).

**No Prenatal Care** - Percentage of all children born in 1994, 1995, 1996, 1997 and 1998 whose mothers reported receiving no prenatal medical care (Center for Health Statistics, NJ Department of Health and Senior Services). Such children are more likely to be of low birth weight (see Low Birth Weight indicator). Mothers who do not receive prenatal care have higher rates of maternal death, illness and complications, all of which have adverse implications for the child.

**Out of Home Placements** - The number of children placed in settings such as foster care, residential care or other out of home placements in 1995, 1996, 1998, 1999 and 2000. Newark data represent numbers as of July, 1995, 1996, 1998, 1999 and 2000 (Division of Youth and Family Services, NJ Department of Human Services). Children who are placed in such a setting often lack the stability of a nurturing home life.

**Per Capita Income 1998** - (PCP Income, NJ Department of Labor, November 2000).

**Population 1990, 2000** - (U.S. Census Bureau, Census 2000 Redistricting Data (P.L. 94-171) Summary File, Table PL1, and 1990 census).

**Poverty Level** - Defined by the U.S. Department of Health and Human Services as the threshold for the distribution of AFDC/TANF and Food Stamp Benefits.

**Primary Presenting Problem (PPP)** - The Primary Presenting Problem of children admitted to mental health programs partially or fully funded by the state of New Jersey in 1996, 1997, 1998 and 1999. These numbers do not represent all children in mental health facilities, or the number of children in need of mental health services (Division of Mental Health Services, NJ Department of Human Services).

**Registered Voters** - Commissioner of Registrations Office, County of Essex, as of October 23, 1996, September 22, 1997, October, 1998, December 29, 1999 and April, 2001.

**Scholastic Aptitude Test (SAT)** - Data represent average scores for high schools for the 1998-1999 and 1998-2000 school years. This test is used as selection criteria for admittance into most colleges and universities (New Jersey School Report Card 1998-1999 and 1999-2000 Update, NJ Jersey Department of Education).

**School Based Youth Service Health Clinic Data** - The School Based Youth Services Program provides health care services to students from Pre-K to 8th Grade including medical and dental care, as well as health education and prevention programs. All children in each school are eligible for services as long as a parental consent form is provided. Health Clinics are located at Quitman Street School, Dayton Street School and George Washington Carver School (Community Clinical Services Department, Children's Hospital of NJ at Newark Beth Israel Medical Center).

**Self Sufficiency Standard for Essex County** - The Self-Sufficiency Standard measures how much income is needed for a family of a given composition in a given place, to adequately meet its basic needs- without public or private assistance. The EITC, Child Care Tax Credit and Child Tax Credit are considered income and are therefore subtracted from the total dollar amount necessary to be self-sufficient. The EITC is zero for all columns because Monthly Self-Sufficiency Wage exceeded income eligibility to receive the credit in 1999. (The Real Cost of Living: The Self-Sufficiency Standard for New Jersey, Legal Services of New Jersey Poverty Research Institute; and New Jersey Center for Economic Policy and Education).

**Sexually Transmitted Diseases** - Reported cases of sexually transmitted diseases for children under 19 to the NJ Department of

Health and Senior Services for 1996, 1997, 1998 and 1999. These were obtained directly from the lab reports regardless of whether children received treatment. In other words, the data show all reported cases, not just those receiving treatment (Sexually Transmitted Disease Control Program, NJ Department of Health and Senior Services).

**Student Enrollment** - Number of students and ethnic breakdown in the Newark Public Schools in 1995, 1996, 1997, 1998 and 1999 (Newark Public Schools).

**Substantiated Child Abuse Cases** - The number of substantiated abuse and neglect cases in 1994, 1995, 1996, 1997, 1998 and 1999. Data in 1996 may reflect changes in DYFS case handling standards. Modifications to case handling at screening and intake-due primarily to workers' new consciousness of risk to children living with substance abusing parents - has increased the proportion of reports classified as abuse and neglect relative to those classified as family problems. (Division of Youth and Family Services, NJ Department of Human Services). A substantiated case is determined when a DYFS social worker establishes that a child has been physically, sexually, mentally, or emotionally abused by a parent, guardian or other adult who has control or custody of the child, and that the abuse can cause or create a substantial risk of impairment or death to the child ("Children at Risk 1993 and 1994", "Children at Risk 1995 and 1996").

**TANF, Temporary Assistance to Needy Families** - The number of children receiving TANF benefits in 1997, 1998, 1999 and 2000 - March, July, November average. This time-limited program provides cash assistance to eligible needy families with children. As part of Work First New Jersey (WFNJ) the program also provides parents with job preparation, and support services to enable them to leave the program and become self sufficient. (NJ Department of Human Services).

**Teen Deaths** - The number of adolescents (ages 15-19) who died in 1994, 1995, 1996, 1997 and 1998 (Center for Health Statistics, NJ Department of Health and Senior Services). A high percentage of adolescent deaths are caused by motor vehicle-related injuries, homicide, suicide, and other high risk behaviors. These causes are associated with risks in their families and communities, such as the lack of well-developed interventions and services. (See Death Data). Note: Most counties and cities have relatively low numbers of teen deaths.

**Vaccination Coverage Levels** - Percent of two year old children receiving the complete series of 4 doses of the diphtheria, tetanus and pertussis vaccine; 3 doses of the poliovirus vaccine; and 1 dose of the measles-mumps-rubella vaccine. Two-year olds are defined as children ages 19-35 months (Centers for Disease Control, Morbidity and Mortality Weekly Report, June, 1996, July, 1997, July, 1998, September, 1999 and July 2000).

**Violent Incidents and Weapon Possessions in the Newark Public Schools** - Violent Incidents are defined as simple assaults, aggravated assaults, fighting, verbal threats and teacher confrontations. Weapon Possessions are defined as possession of a firearm or other weapon (Newark Public Schools).

**Wastes Sites** - Number of reported wastes sites to the Agency for Toxic Substances and Disease Registry (ATSDR), HazDat. Anyone concerned about the hazardous or nonhazardous status of a particular site should contact the ATSDR.

**Water Lead Levels** - The acceptable limit for lead in drinking water is 0.0150 mg of Lead per 1 L of water (Division of Sewers and Water Supply, Newark Department of Water and Sewer Utilities).

**WIC** - A special supplemental food program for women, infants, and children which provides food and nutrition screening and education to at-risk, low-income pregnant women, new mothers, infants and children under age five. Data is for the quarter ending June 30, 1996, the

quarter ending June 30, 1997, the quarter ending June 30, 1998, the quarter ending January 1, 1999 and the quarter ending March 1, 2000 (NJ Department of Health and Senior Services).

**For more information about  
the Newark Kids Count Initiative, please contact  
Gina Lucas or Becky Romanoff at ACNJ at  
(973) 643-3876, or E-mail at [bromanoff@acnj.org](mailto:bromanoff@acnj.org)**

**Newark Kids Count 2001 is also  
available at ACNJ's website at  
[www.acnj.org](http://www.acnj.org)**